

How to Import the BlazeVIEW Student Guide Module

Table of Contents

How to Import the BlazeVIEW Student Guide Module	1
Overview of the BlazeVIEW Student Guide Module.....	1
Downloading the BlazeVIEW Student Guide Module.....	1
Importing the File into Your Course.....	3
BlazeVIEW Student Guide Module Contents	5

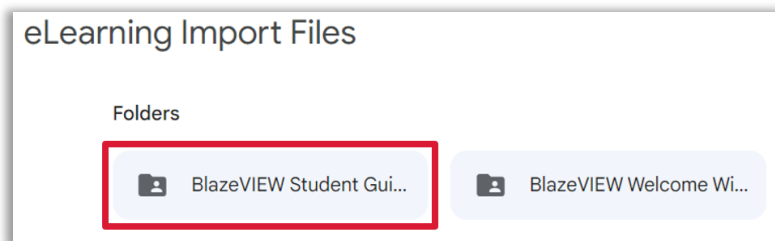
Overview of the BlazeVIEW Student Guide Module

The BlazeVIEW Student Guide module is available for instructors to import into any course. The guide provides students with direct access to videos and step-by-step instructions for essential BlazeVIEW tools and resources to help them be successful in your course. This document explains how to download and import the zipped BlazeVIEW Student Guide Module into a course.

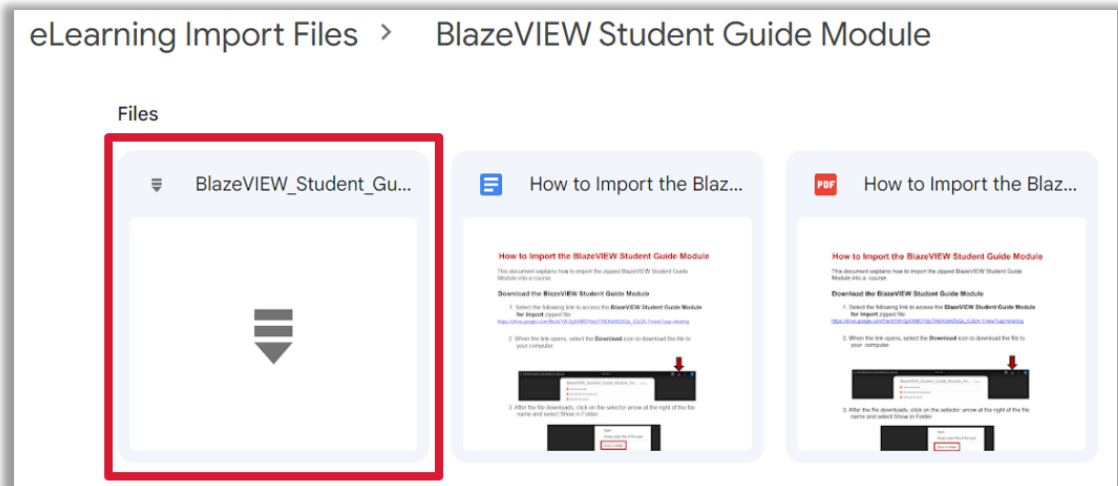
Note: The BlazeVIEW HTML Template and Widgets Import file already contains an HTML version of the BlazeVIEW Student Guide.

Downloading the BlazeVIEW Student Guide Module

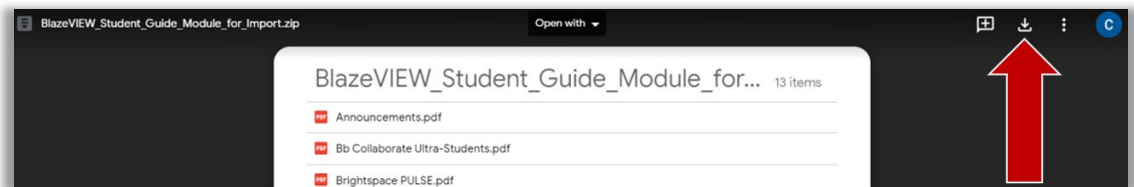
1. Open the [eLearning Import Files Google Drive folder](#).
2. Click the **BlazeVIEW Student Guide Module** folder to open it.



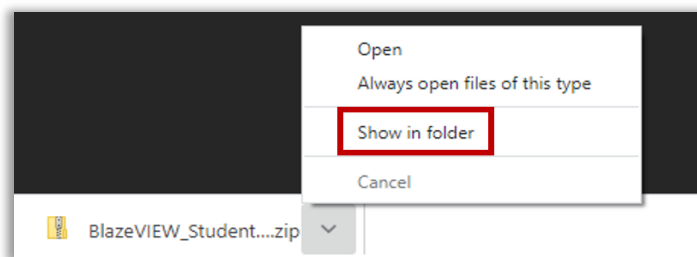
3. Select the **BlazeVIEW_Student_Guide_Module_for_Import.zip** file.



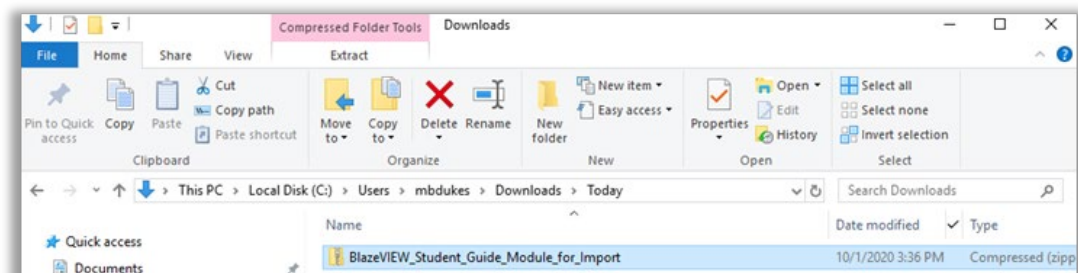
4. When the link opens, select the **Download** icon to download the file to your computer.



5. After the file downloads, click on the selector arrow at the right of the file name and select **Show in Folder**.

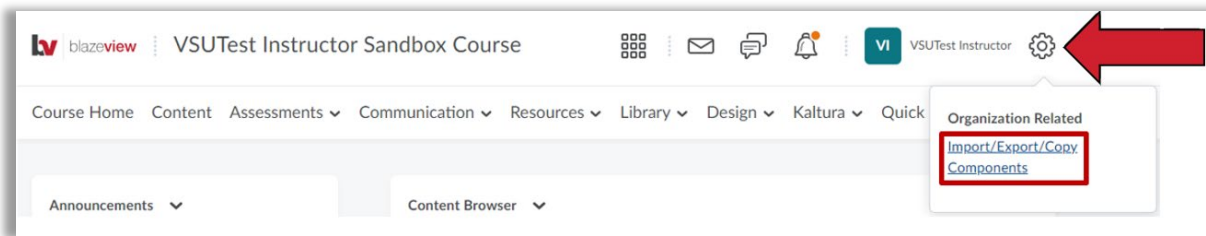


6. The **BlazeVIEW Welcome Widget Template** compressed (zipped) file should download into your Downloads folder so that you can import it into your course(s).



Importing the File into Your Course

1. Navigate to the course you plan to import the BlazeVIEW Student Guide Module.
2. Click the Admin Tools icon on the Minibar and select **Import/Export/Copy Components**.



3. Select **Import Components**, then click **Start**.

Import/Export/Copy Components

What would you like to do?

Copy Components from another Org Unit
[What is an Org Unit?](#)

Course to Copy:

Include protected resources

Copy Components from Parent Template
[What is a Parent Template?](#)

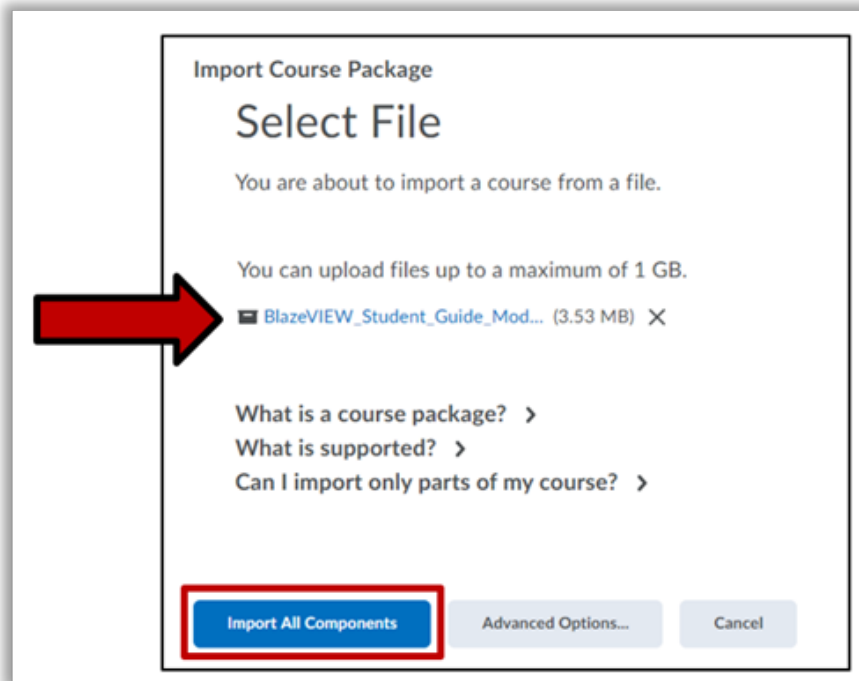
Include protected resources

Export as Brightspace Package
[Should I include course files?](#)

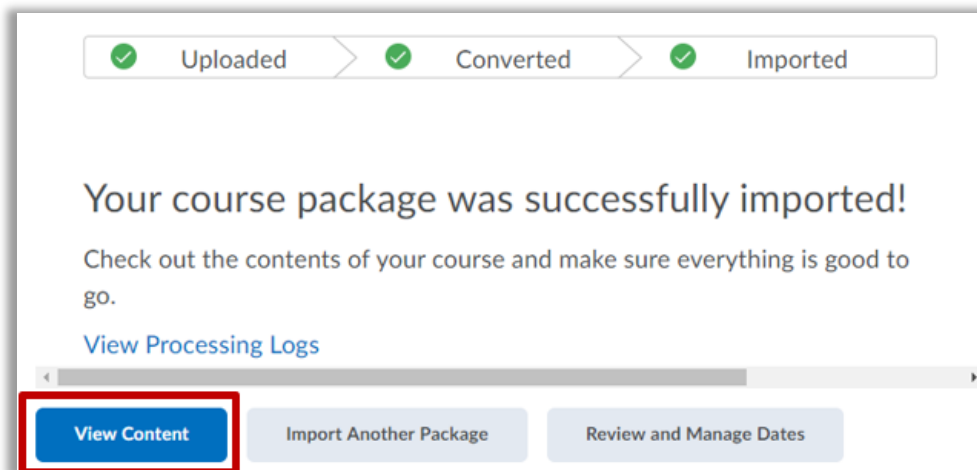
Include course files in the export package

Import Components

4. Click the **Upload** button and browse to upload the **BlazeVIEW Welcome Widget Template** file you downloaded earlier, then click the **Import All Components** button.



5. When the import is complete, click on the **View Content** button to navigate your course's Content section.



BlazeVIEW Student Guide Module Contents

BlazeVIEW Student Guide ▾

Print

Settings

Add dates and restrictions...

BlazeVIEW provides VSU students with anytime, anywhere access to their courses. To help you get started with BlazeVIEW, we have created this student guide that includes links to videos and instructions for navigating and using these resources and tools. Learn how to update your profile and notification settings, submit assignments and quizzes, view your grades, and communicate with your instructor and classmates.

BlazeVIEW Support ▾

- **VSU Technology Services Portal**

You can submit help requests to both IT and the Center for eLearning with the VSU Technology Services Portal (TSP). You can access the TSP from your **MyVSU** login page or by visiting solutions.valdosta.edu and logging in with your MyVSU username and password.

- **VSU Center for eLearning**

The Center for eLearning supports Valdosta State University and VSU-collaborative students with support for technology-enhanced courses using BlazeVIEW or the University System of Georgia (USG) collaborative learning management system, GoVIEW.

Hours: Monday-Thursday: 8am-5:30pm (ET)

Friday: 8am-3pm (ET)

Phone: 229-245-6490

Email: blazeview@valdosta.edu

[Center for eLearning's Contact Us Form](#)

- **D2L Help Center**

24 hours a day / 7 days a week / 365 days a year!

Technical support for BlazeVIEW is provided by the D2L Help Center.

Phone: 1-855-772-0423

[How do I know if my computer will work with D2L?](#)

[Need Live Online Chat Support?](#)



VSU's BlazeVIEW learning management system is based on the Brightspace D2L learning platform. Navigate within BlazeVIEW using links, context menus, and icons. If at any time you want to know what an icon or menu does, hover your mouse over it for a few seconds and a screen-tip will pop up with a brief description.

In this tutorial we will review the basic navigation and personalization of your BlazeVIEW online learning environment.

Upload / Create ▾

Existing Activities ▾

☰ **Navigation** ▾
📺 Video



☰ **Account Settings** ▾
📺 Video



☰ **Profile** ▾
📺 Video



☰ **Notifications** ▾
📺 Video



☰ **Content** ▾
📺 Video



☰ **Calendar** ▾
📺 Video



☰ **Class Progress** ▾
📺 Video





In this section, we have instructions and videos demonstrating how to complete graded activities such as Assignments, Quizzes, and Discussions. Select these links to learn more about BlazeVIEW assessments and grades.

Upload / Create ▾

Existing Activities ▾

☰ Assignments ▾

📺 Video



☰ Assignments in BlazeVIEW - Student Guide ▾

📄 PDF document



☰ Engage in Discussions ▾

📺 Video



☰ Discussions in BlazeVIEW - Student Guide ▾

📄 PDF document



☰ Quizzes ▾

📺 Video



☰ Quizzes in BlazeVIEW - Student Guide ▾

📄 PDF document



☰ Respondus LockDown Browser and Respondus Monitor - Student Quick Start Guide ▾

📄 PDF document



☰ Grades ▾

📺 Video





Blazers stay connected with instructors and classmates by using the communication tools available in BlazeVIEW. Select the links to learn more.

Upload / Create ▾

Existing Activities ▾

☰ [Classlist](#) ▾

📺 Video



☰ [Classlist in BlazeVIEW - Student Guide](#) ▾

📄 PDF document



☰ [Email Options in BlazeVIEW - Student Guide](#) ▾

📄 PDF document



☰ [Instant Messages](#) ▾

📺 Video



☰ [Instant Messages in BlazeVIEW - Student Guide](#) ▾

📄 PDF document



☰ [Announcements in BlazeVIEW - Student Guide](#) ▾

📄 PDF document



☰ [Collaborate Ultra - Participant Guide](#) ▾

📄 PDF document



☰ Brightspace Pulse Mobile App for BlazeVIEW ▾

Stay connected with your BlazeVIEW courses with the free Brightspace PULSE mobile app. Available on Android and iOS, this app allows you to check in to your courses that utilize D2L Brightspace even when you're on the go.

The main features of the app include:

- View upcoming items that are due
- See a graphical view of workload for the week
- View Notifications / Announcements
- View Content and Grades
- View and reply to Discussions

Note: We recommend that you use a desktop or laptop computer to complete assignments and quizzes. Sites outside of D2L Brightspace or areas of D2L Brightspace that are not natively supported by the Brightspace Pulse app will attempt to open up in your mobile device's browser.

Upload / Create ▾ Existing Activities ▾

☰ Brightspace Pulse Learner Guide ▾
 PDF document ✓

For more information or assistance, call 229-245-6490 or email blazeview@valdosta.edu.
 For 24/7 BlazeVIEW or GoVIEW assistance, call 855-772-0423 or visit [GeorgiaVIEW Help Center](#).

