

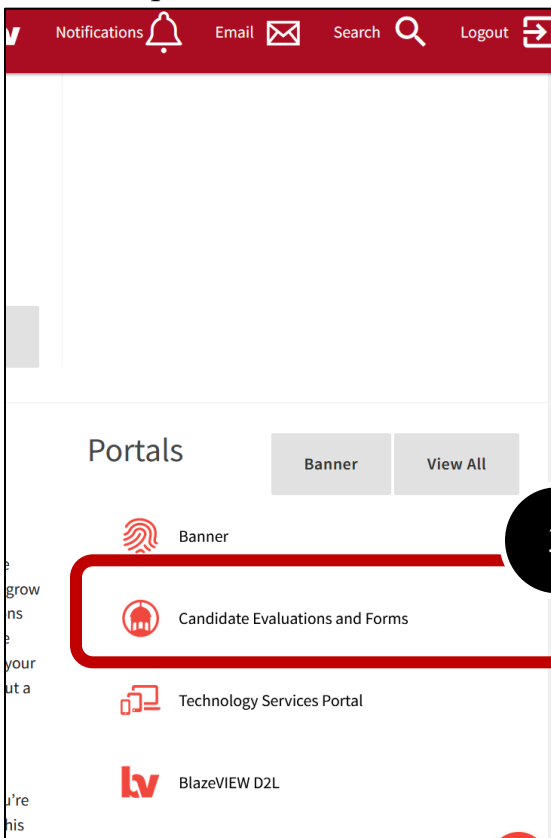
How to Submit Field Evaluations for Your Clinical Practice Candidate(s)

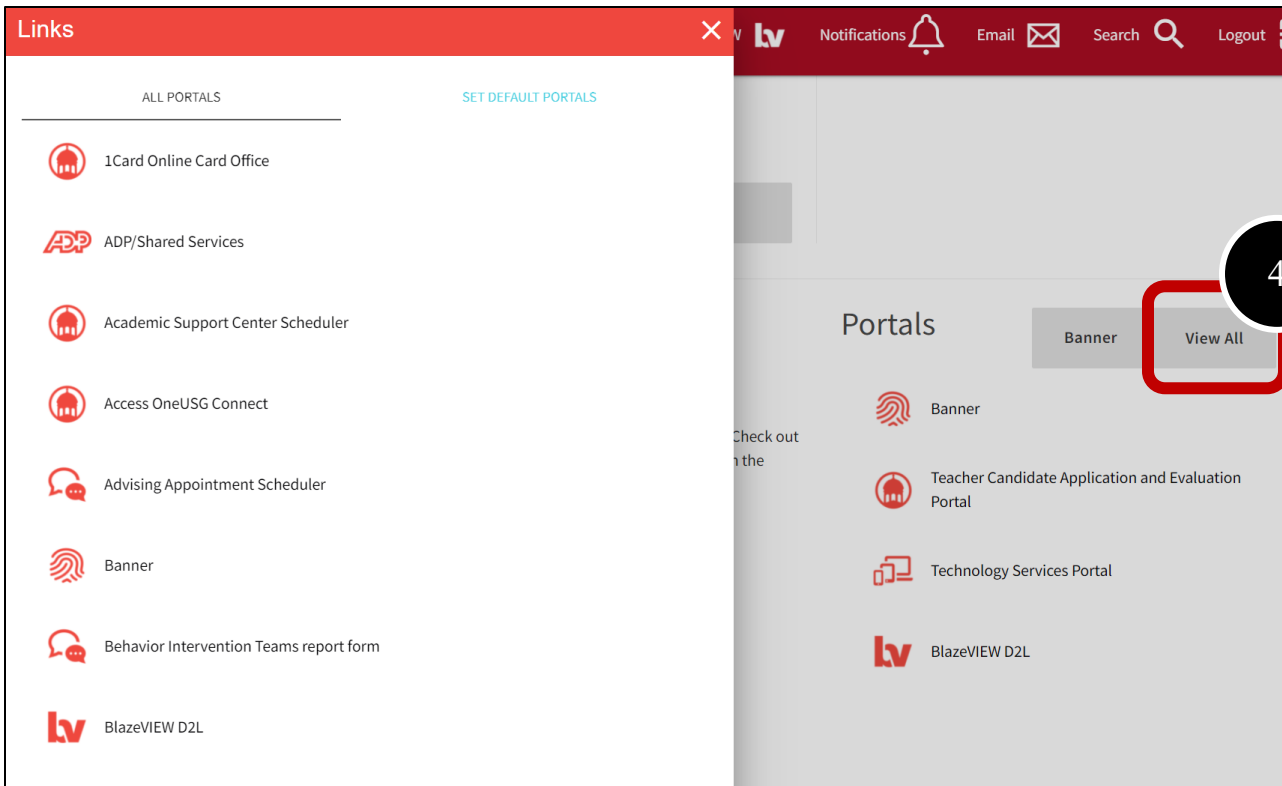
How to: Log into your Clinical Practice Placement and Access Requirements

1. From the VSU Homepage, click on the MyVSU link at the top of the page.
2. Log into your MyVSU account.

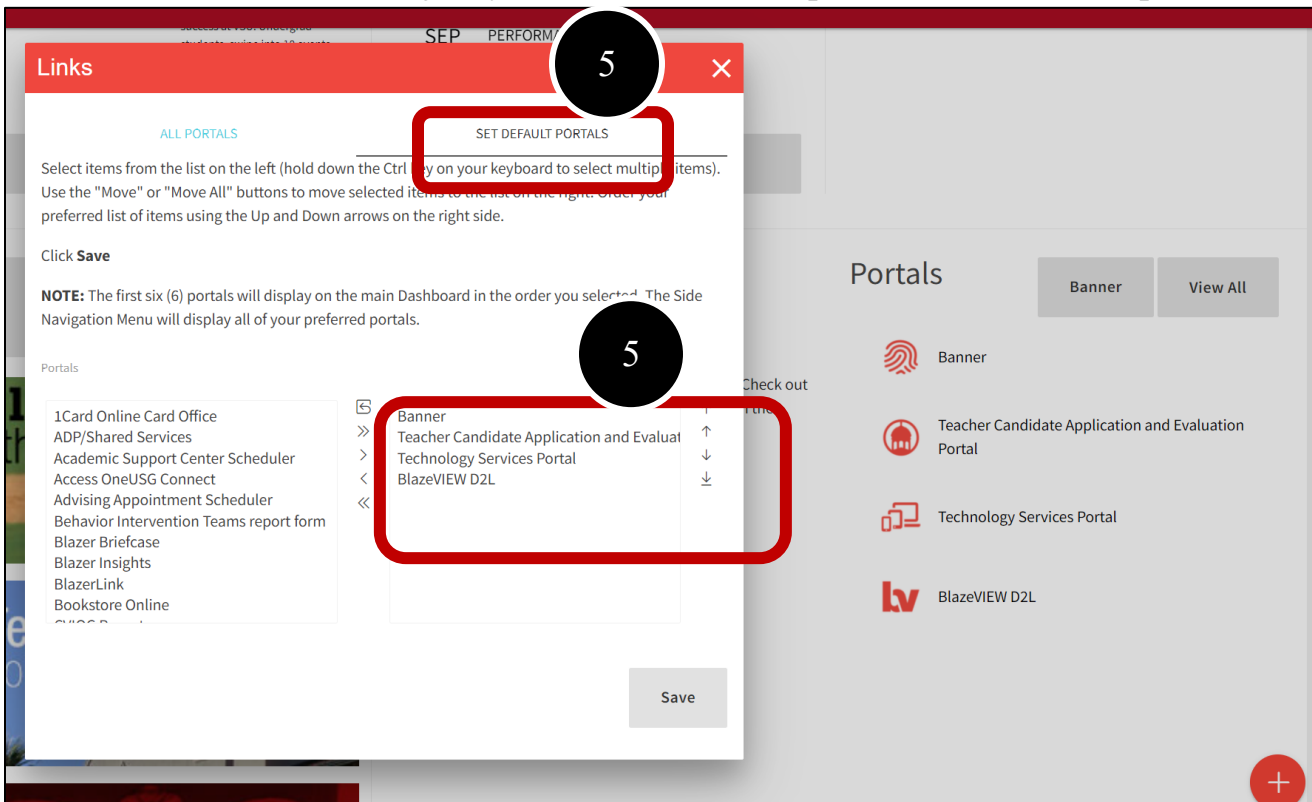


3. Under the Portals section of your MyVSU dashboard, select **Candidate Evaluations and Forms**. If you do not see this portal, go to step 4.
4. If you do not see this portal, select "View All" to the top-right of the portals. Scroll down and select the portal called "Candidate Evaluations and Forms".



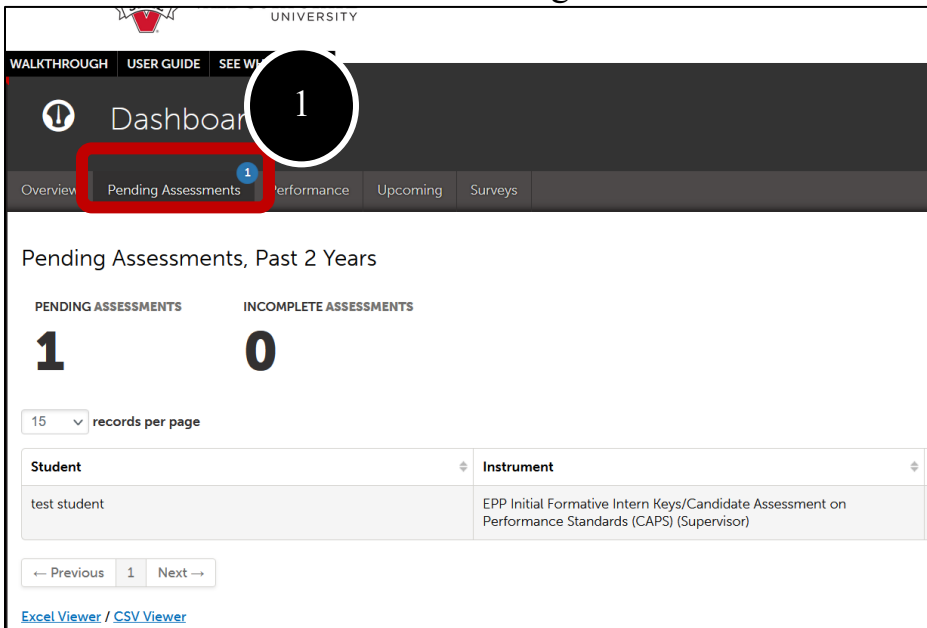


5. Optional: To add it to your list of portals you view each time in your MyVSU account, select “Set Default Portals” and adjust your selected default portals to include this portal.

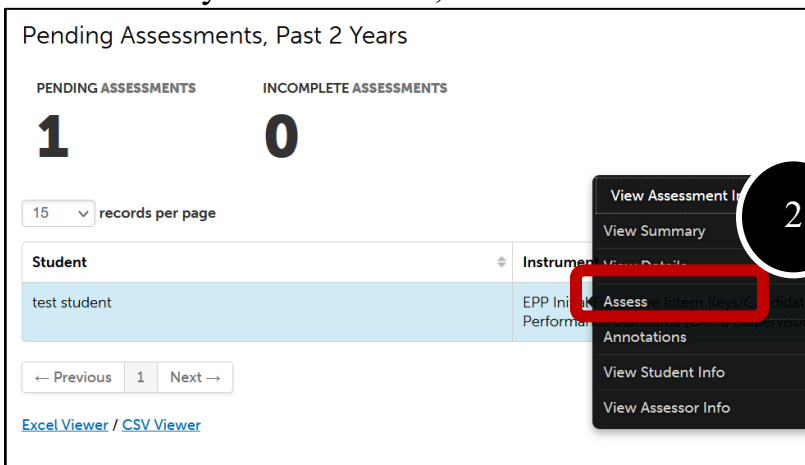


How to: Submit and View Others' Evaluations

1. Once you are in the system after clicking on the MyVSU portal, you can find your upcoming assessments listed under the “Pending Assessments” tab.

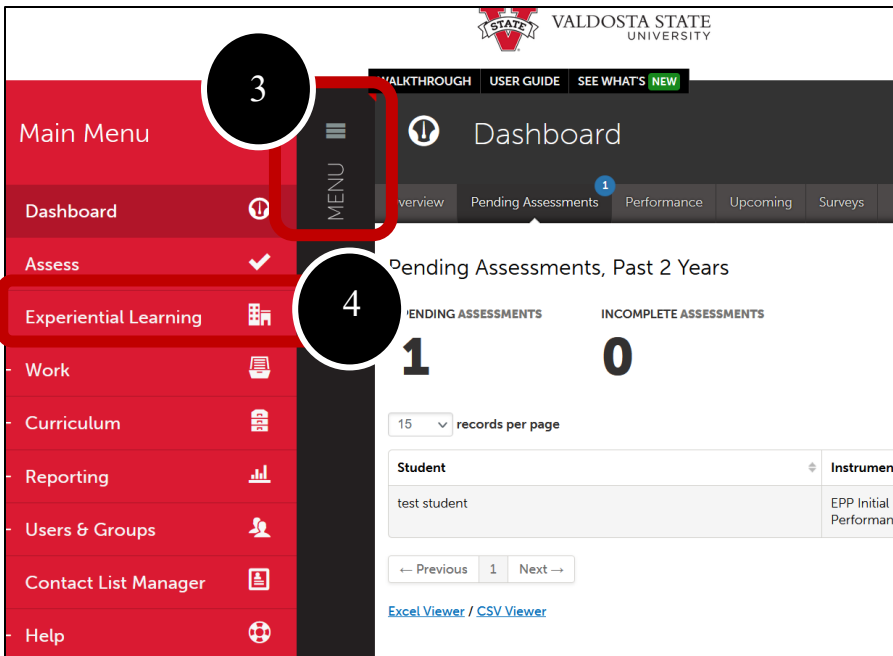


2. To submit your evaluation, left-click on the candidate's name and select **Assess**.

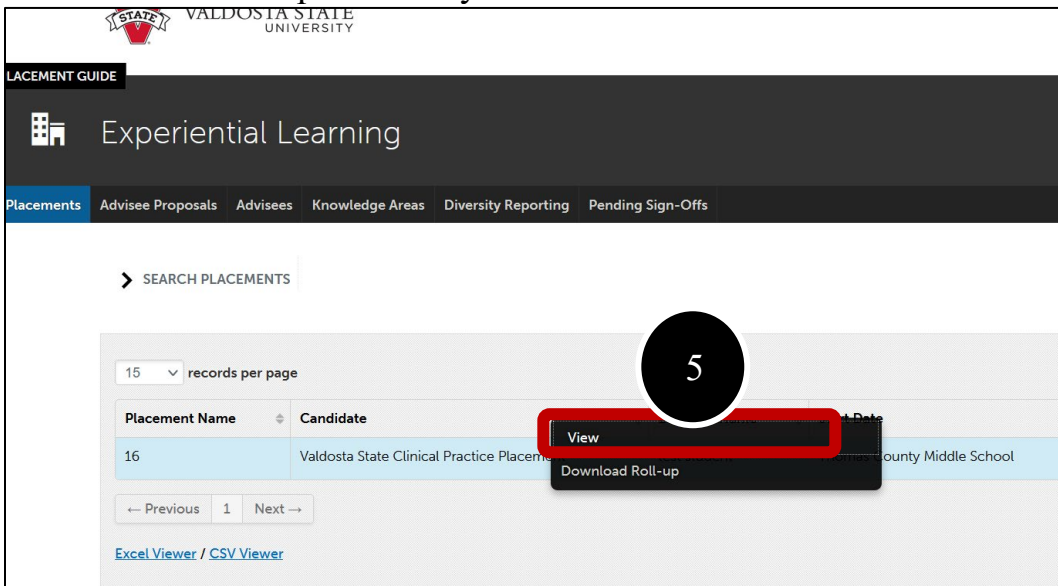


3. To view evaluations completed by the mentor and/or teacher candidate and other placement information, click on the **MENU** text.

4. Next, click on **Experiential Learning**.



5. Left-click on the placement you want to view and select **View**.



6. On this page, you can left-click on the instrument name under the Assessment section to view submissions by you, the teacher candidate, or the mentor teacher. You can see when assessments open and are due on this page and you can access submissions by your mentor and VSU supervisor by left-clicking on the applicable row.

Candidate

test student

Paired Institutional Advisor

None

Stakeholders

Test Mentor (Mentor Teacher) test assessor (VSU Supervisor)

Department/Group

Educator Preparation

Subject/Field

Mathematics

Grade/Level

6

Duration

2021-08-16 - 2021-12-03 0 Hours

Journal Template

Teacher Candidate Clinical Practice Placement Form

Notes

-

Completed Hours

0 / 0 HRS

Journals

Name	Template	Entries	Hours
Valdosta State Clinical Practice Placement	Teacher Candidate Clinical Practice Placement Form	0	0

Assessments

15 records per page

Show / hide columns Print CSV Clear Sort Search:

Assessee	Assessor	Instrument	Description	Available	Due	Assessed On	Score
Candidate	Mentor Teacher	EPP Initial Formative Intern Keys/Candidate Assessment on Performance Standards (CAPS) (Mentor)	Initial Formative Intern Keys/Candidate Assessment on Performance Standards (CAPS)	2021-09-03	2021-09-24	2021-09-10	8
Candidate	Candidate	EPP Initial Formative Intern Keys/Candidate Assessment on Performance Standards (CAPS) (Self)	Initial Formative Intern Keys/Candidate Assessment on Performance Standards (CAPS)	2021-09-03	2021-09-24	2021-09-10	9
Candidate	VSU Supervisor	EPP Initial Formative Intern Keys/Candidate Assessment on Performance Standards (CAPS)	Initial Formative Intern Keys/Candidate Assessment on Performance Standards (CAPS)	2021-09-03	2021-09-24	2021-09-10	6
Candidate	Mentor	EPP Mid-Formative Intern Keys/Candidate Assessment on Performance Standards (CAPS)	Mid-Formative Intern Keys/Candidate Assessment on Performance Standards (CAPS)	2021-10-01	2021-10-22		

View Summary

