

::Approved Faculty and Staff Only

Setup and Use RDC from a Mac Computer

Remote Desktop Connection (RDC) is a system that allows VSU employees to access and control their office computers from off-campus for work-at-home purposes.

Benefits of using a RDC:

- Access software, documents, or emails available on your office computer without copying files.
- Access applications that can only be run from on-campus, such as Banner Forms.
- Print to your networked office printer.



For additional assistance, contact:

Information Security
security@valdosta.edu

or

VSU Solutions Center
229-245-HELP (4357)
solutions@valdosta.edu

or

Visit
www.valdosta.edu/it

Table of Contents

RDC Requirements	3
Configure Your Mac Computer	3
1. Install the Microsoft Remote Desktop App	3
Open Application:	3
2. Configure Gateway Server Settings	4
3. Set Up New Connection	4
Connect to Your Office Computer	5
1. Make the connection	5
2. Authenticate Login	5
3. Log in to your office computer	5
Break Connection.....	5
1. Log Off.....	5

RDC Requirements

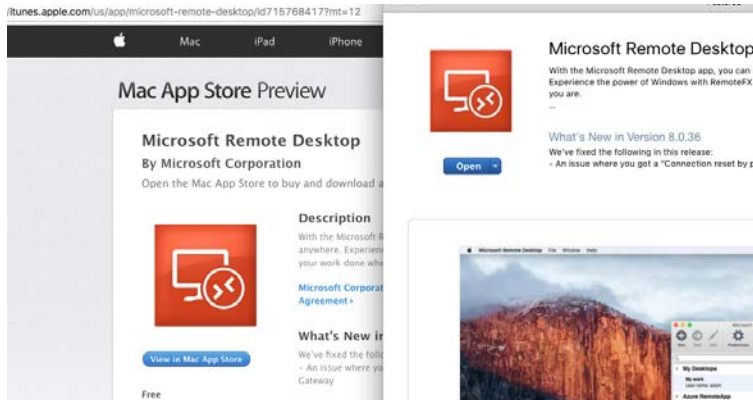
In order to utilize VSU remote desktop connection (RDC), you must:

- have received prior approval from VSU Information Security.
- have high-speed internet access.
- leave your office computer powered on.

Configure Your Mac Computer

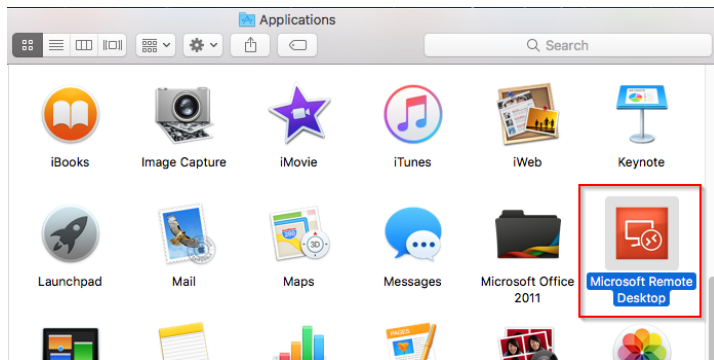
1. Install the Microsoft Remote Desktop App

From **iTunes App Store/Mac App Store**, search for **Microsoft Remote Desktop** and **download the application**.



Open Application:

On the Dock, click the **Finder** icon. Choose **Applications** on the left sidebar. Double click the **Microsoft Remote Desktop** icon to open it. You can drag this icon to your Dock to easily access it in the future.

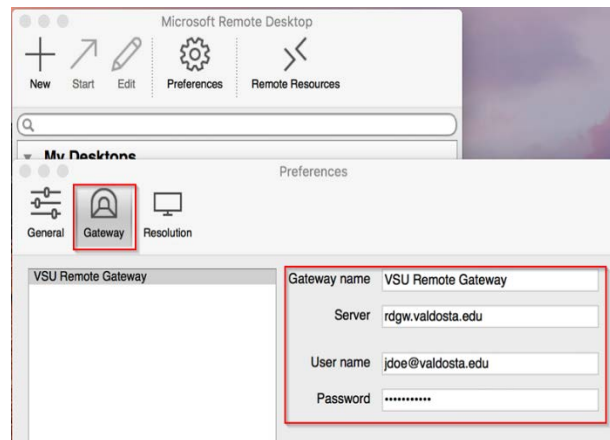


2. Configure Gateway Server Settings

Click the **Preferences** icon > click the **Gateway** icon located at the top of the screen.
Enter the following in the appropriate fields:

- Gateway name: **VSU Remote Gateway**
- Server: **rdgw.valdosta.edu**
- Username: **Your VSU email address**
(ex: jdoe@valdosta.edu)
- Password: **Password used to log in to your campus desktop computer**

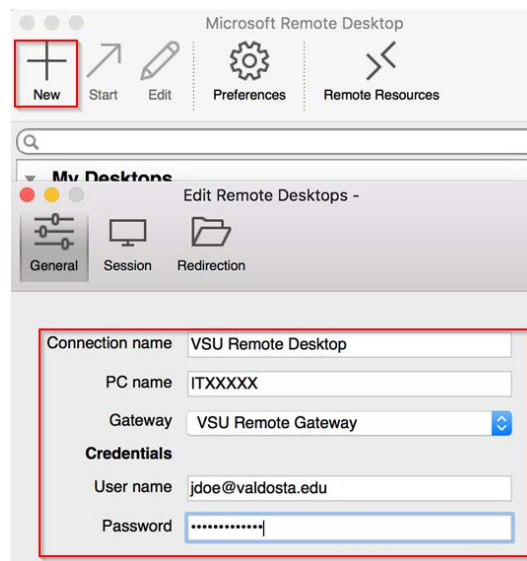
Close the dialog box.



3. Set Up New Connection

Click the **New Connection** icon located far left on the top menu > click the **General** icon.
Enter the following in the appropriate fields:

- Connection Name: A **custom name** to identify connection (ex. VSU Remote Desktop).
- PC name: **Your office computer VSU IT tag number** (ex: IT99999).
The tag# is affixed to the computer, and was listed on the form you submitted.
- Gateway: Click the dropdown arrow, select **VSU Remote Gateway**.
- Username: **Your VSU email address** (ex: jdoe@valdosta.edu)
- Password: **Password used to log in to your campus desktop computer**
- All other fields can be left at the default settings.



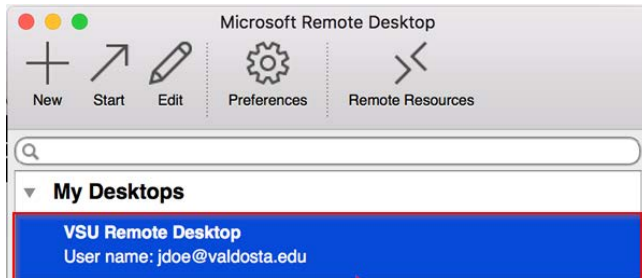
Close the dialog box.



Connect to Your Office Computer

1. Make the connection

Under **My Desktops**, double-click the connection name you created.



2. Authenticate Login

Respond to the [two-factor authentication \(2FA\)](#) request to approve the login.

The authentication request will use the default method that you set up (phone call, text, or mobile app).

3. Log in to your office computer

- Click the **Yes** button if you receive a dialog box stating that 'the identity of the remote computer cannot be verified due to a problem with the security certificate.'

Enter your **VSU username and password** to log in to your desktop computer.

Break Connection

1. Log Off

On your PC office computer, click the **Start Menu** icon /Power icon and select **Log off**.

On your Mac office computer, click the **Apple icon**  in the upper-left corner of the screen. Click **Logout** to view dialog box > click **Log Out**.

