



SENIORS' PERCEPTIONS OF
THEIR EXPERIENCES
AT VALDOSTA STATE UNIVERSITY

SUMMARY RESULTS FROM THE
VALDOSTA STATE UNIVERSITY
SENIOR EXIT QUESTIONNAIRE
2005-2006

Strategic Research & Analysis
Valdosta State University
December 2006

Introduction

This report is a visual summary of the perceptions of the 975 VSU seniors who completed their degrees during the 2005-2006 academic year and returned the Valdosta State University Senior Exit Questionnaire. There were 1,387 graduates total, creating a 70% return rate. It is anticipated that these results will be used by colleges and departments as one indicator of the effectiveness of the University's programs and services.

Student Assistant Lorimar Negrón and Graduate Assistant Tameka Woods coded all of the questionnaires. The report was prepared by Research Analyst Angela Henderson and Research Associate Linda Gooden. The report was proofread for accuracy by Graduate Assistant Tameka Woods. Thanks to Dr. Marsha Krotseng, Associate Vice President of Strategic Research and Analysis, for overseeing the production of this document.

We invite you to explore the results shown on the following pages and welcome your comments.

Table of Contents

Demographic Summary of 2005-2006 Seniors.....4

Graphs:

Atmosphere for Learning8

University's Services and Facilities10

Core and Major Academic Experiences: Use and Quality Ratings16

Tables:

University's Services and Facilities19

Academic Experiences in the Core Curriculum.....20

Academic Experiences in the Major Field of Study:

 College of Arts & Sciences.....22

 Langdale College of Business Administration.....23

 College of The Arts.....24

 College of Nursing.....25

 Dewar College of Education.....26

University's Procedures.....27

Atmosphere for Learning.....28

Seniors' Future Plans.....29

Summary Highlights from 2005-2006 VSU Seniors30

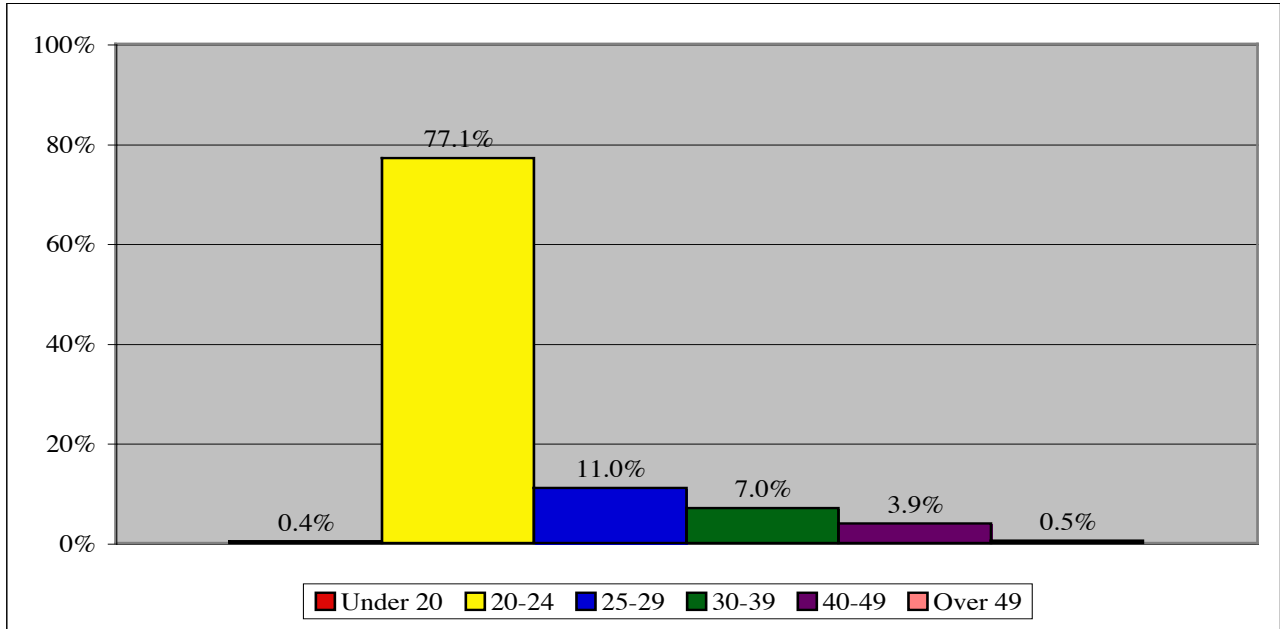
Description of the Responding Seniors

Number of Respondents:

(All percentages are based on valid responses. Not all respondents answered every question.)

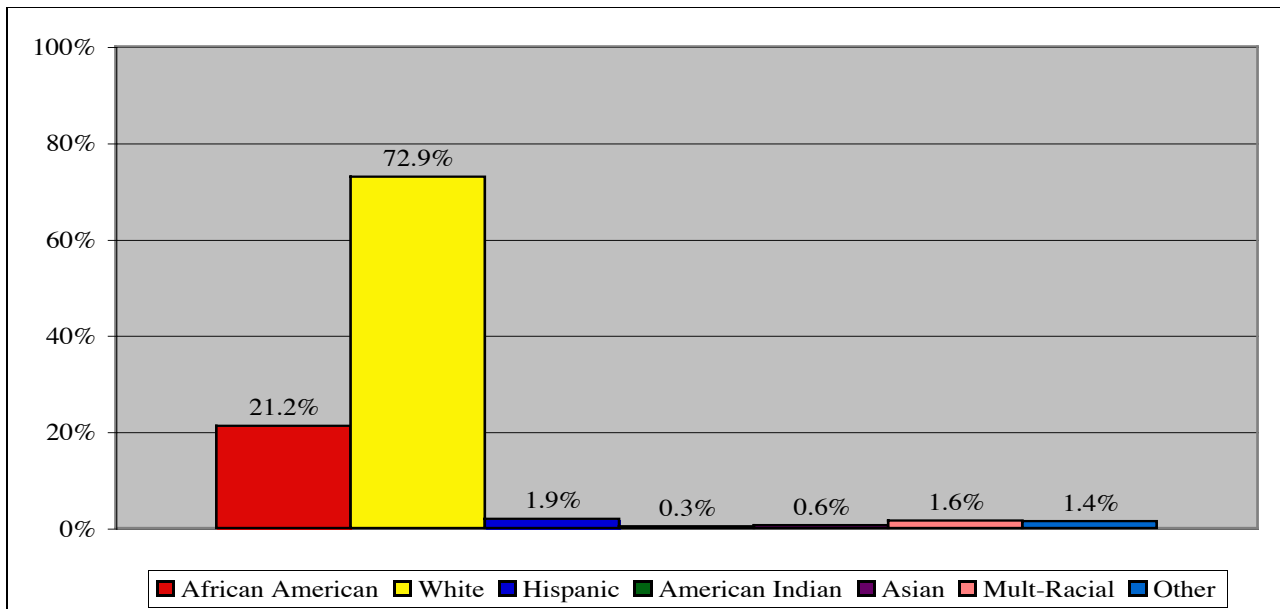
Background Characteristics

Age of Respondents



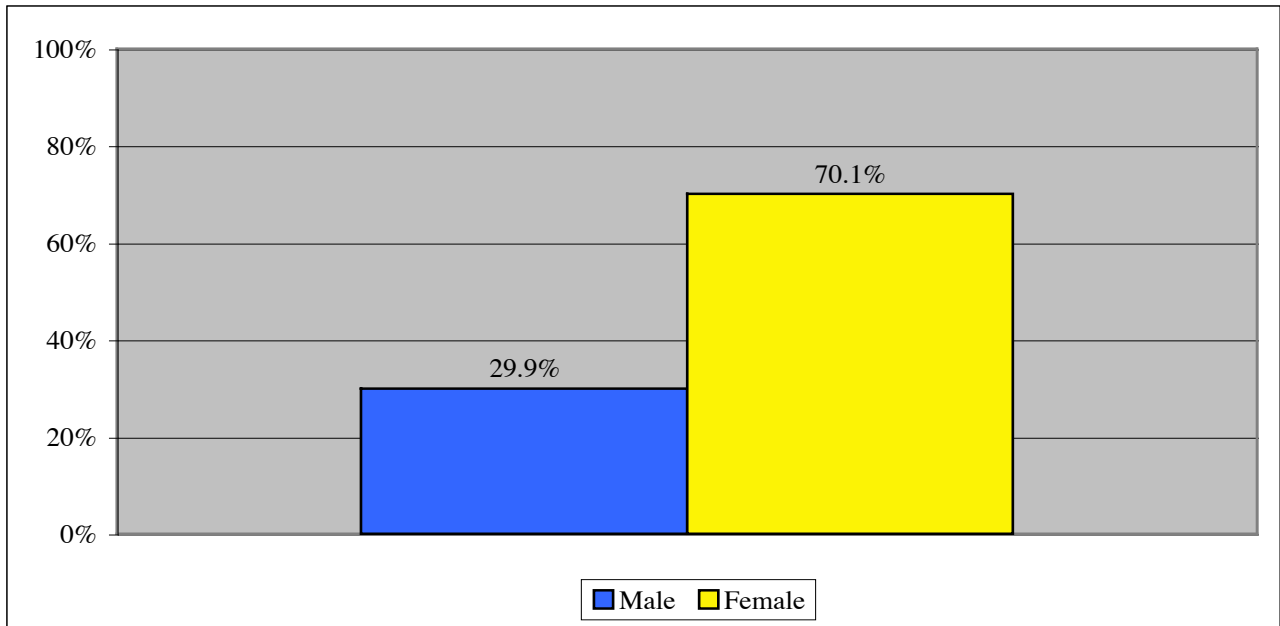
- 830 seniors were between the ages of 20-29.
- 108 seniors were age 30 or above.

Race/Ethnicity



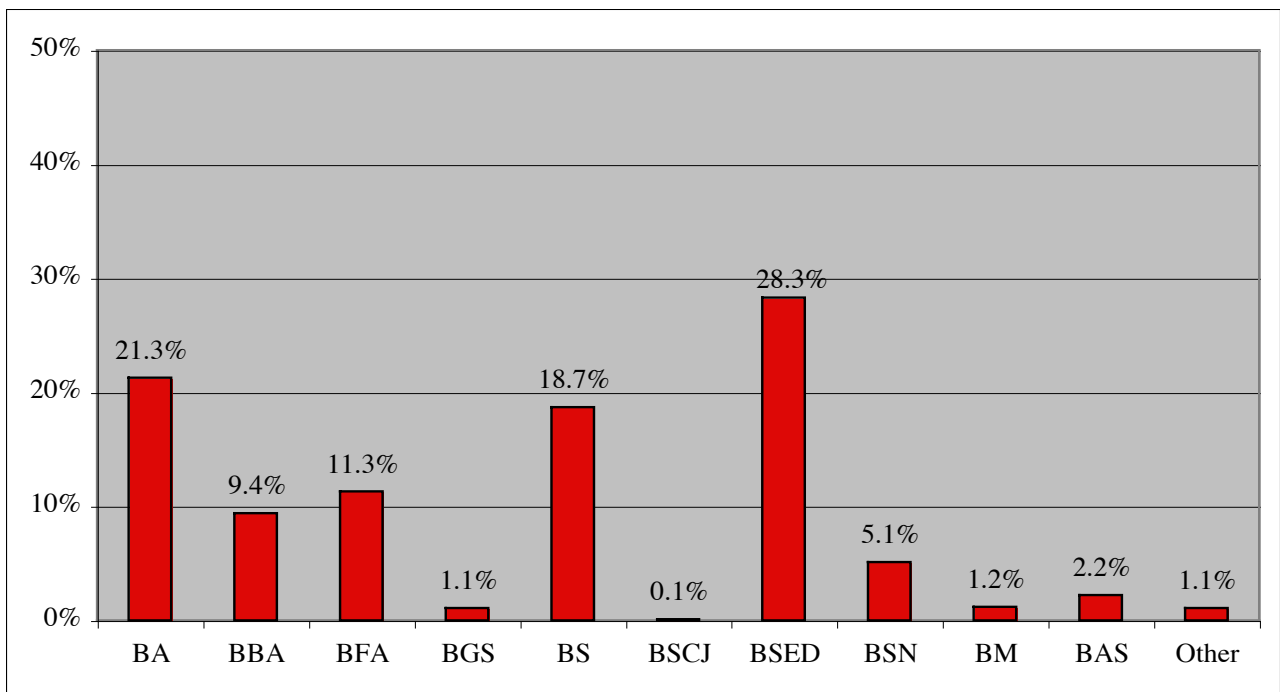
- 197 seniors were Black, non-Hispanic.
- 677 seniors were White, non-Hispanic.
- 55 seniors represented other races/ethnicities.

Gender



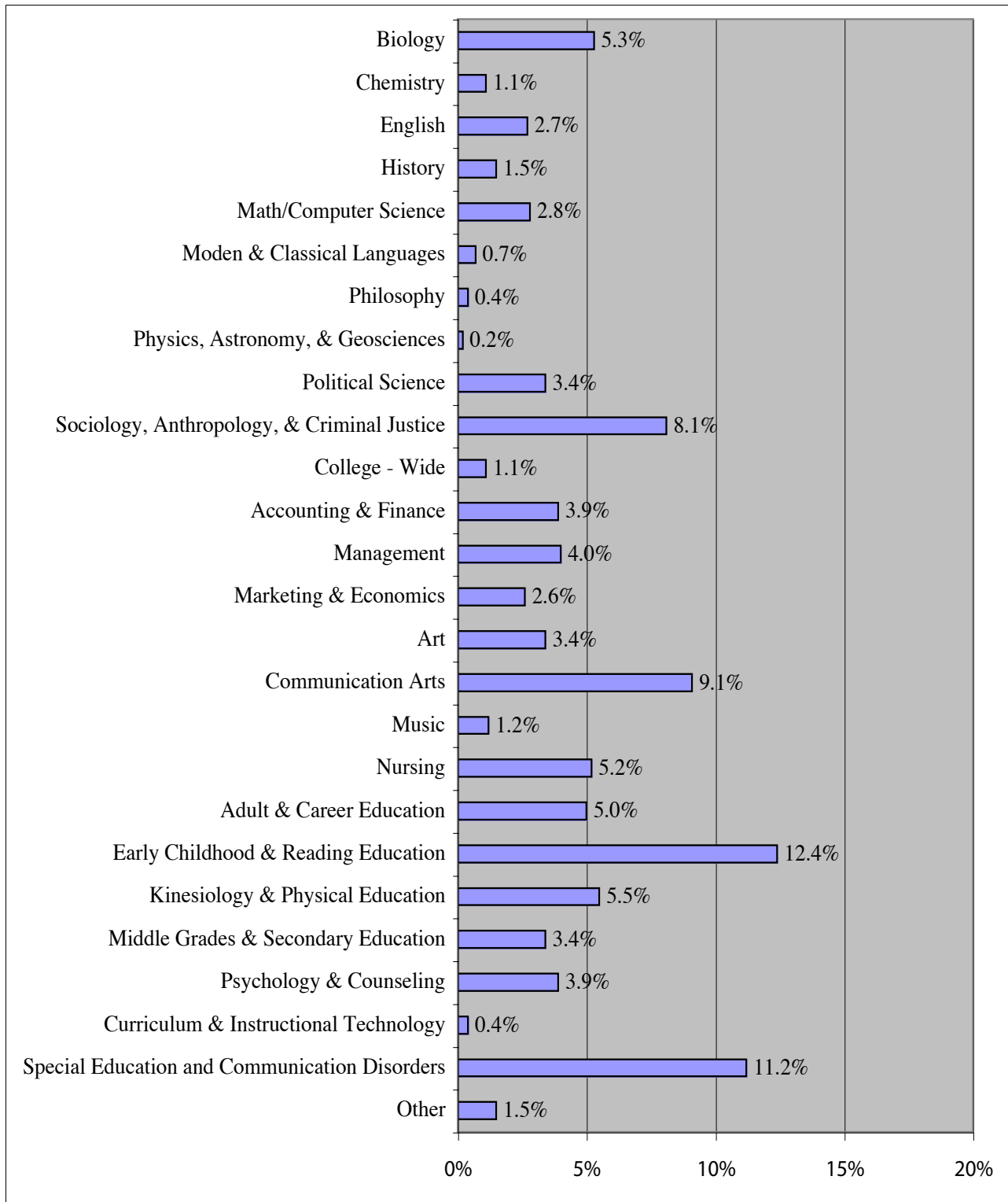
• 279 seniors were male and 654 were female.

Anticipated Degree

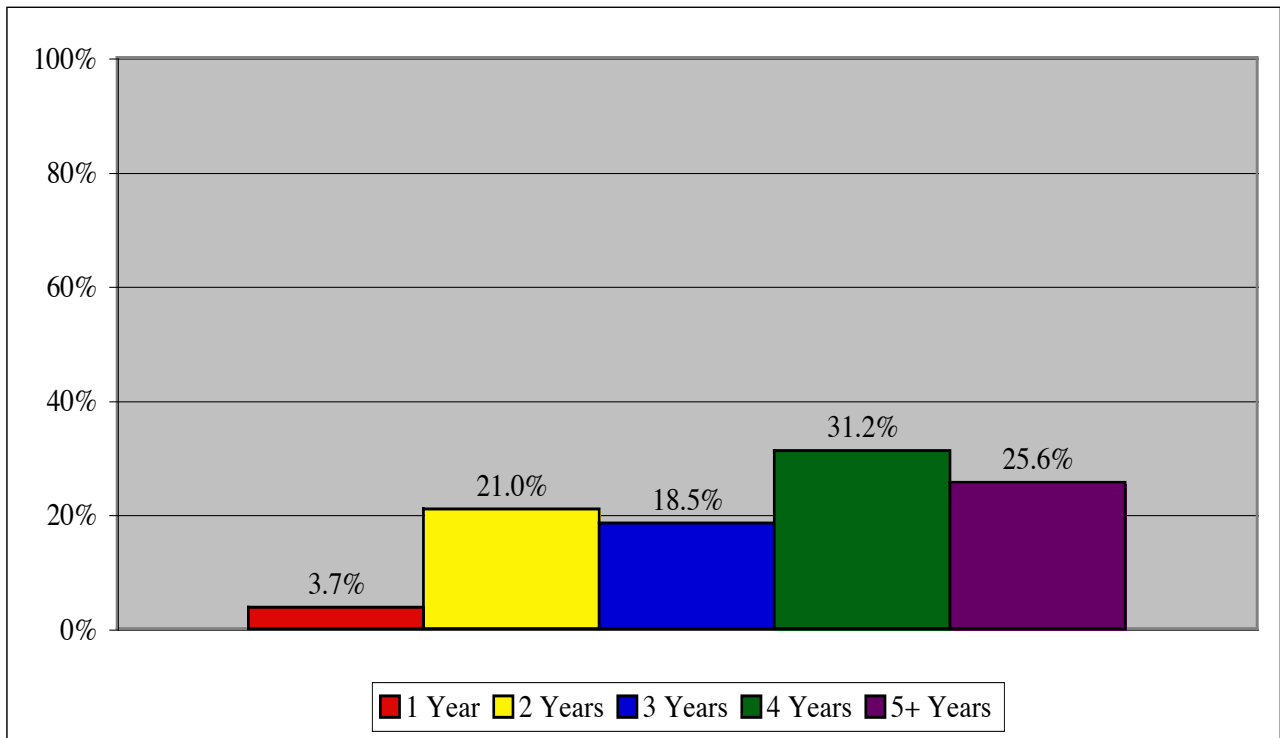


- The majority of seniors, 252, anticipated receiving a BSED degree.
- Another 190 anticipated receiving a BA degree.

Major Field of Study at VSU

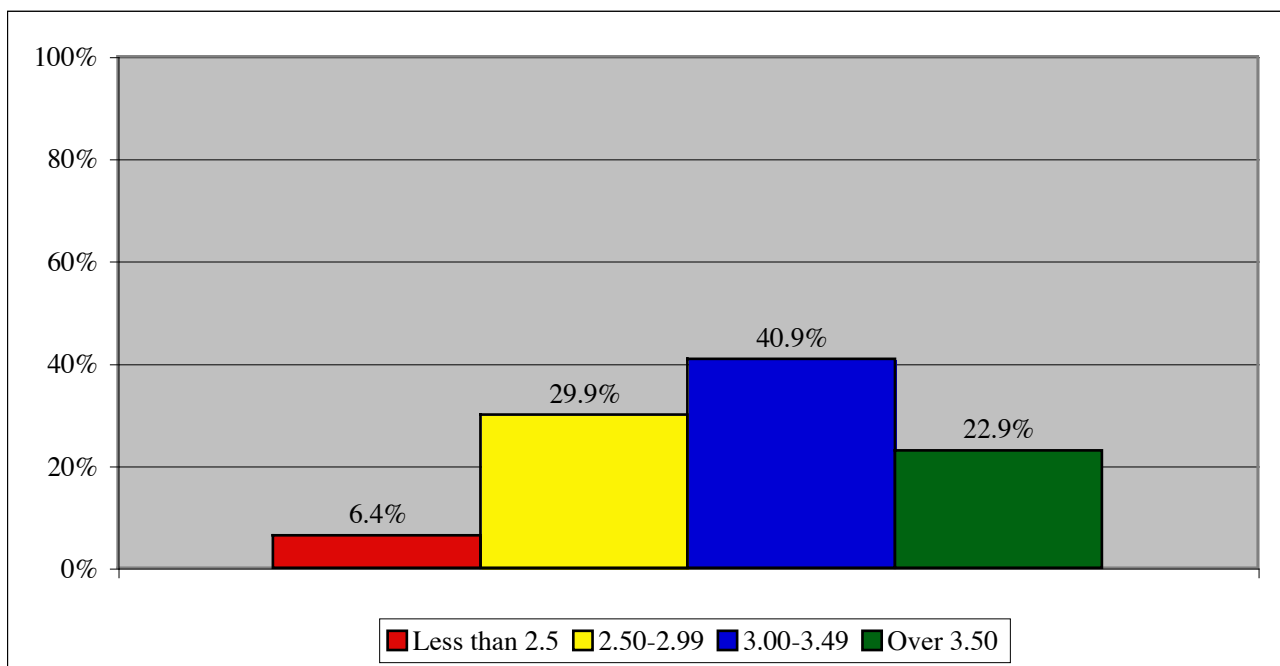


Length of Attendance at VSU



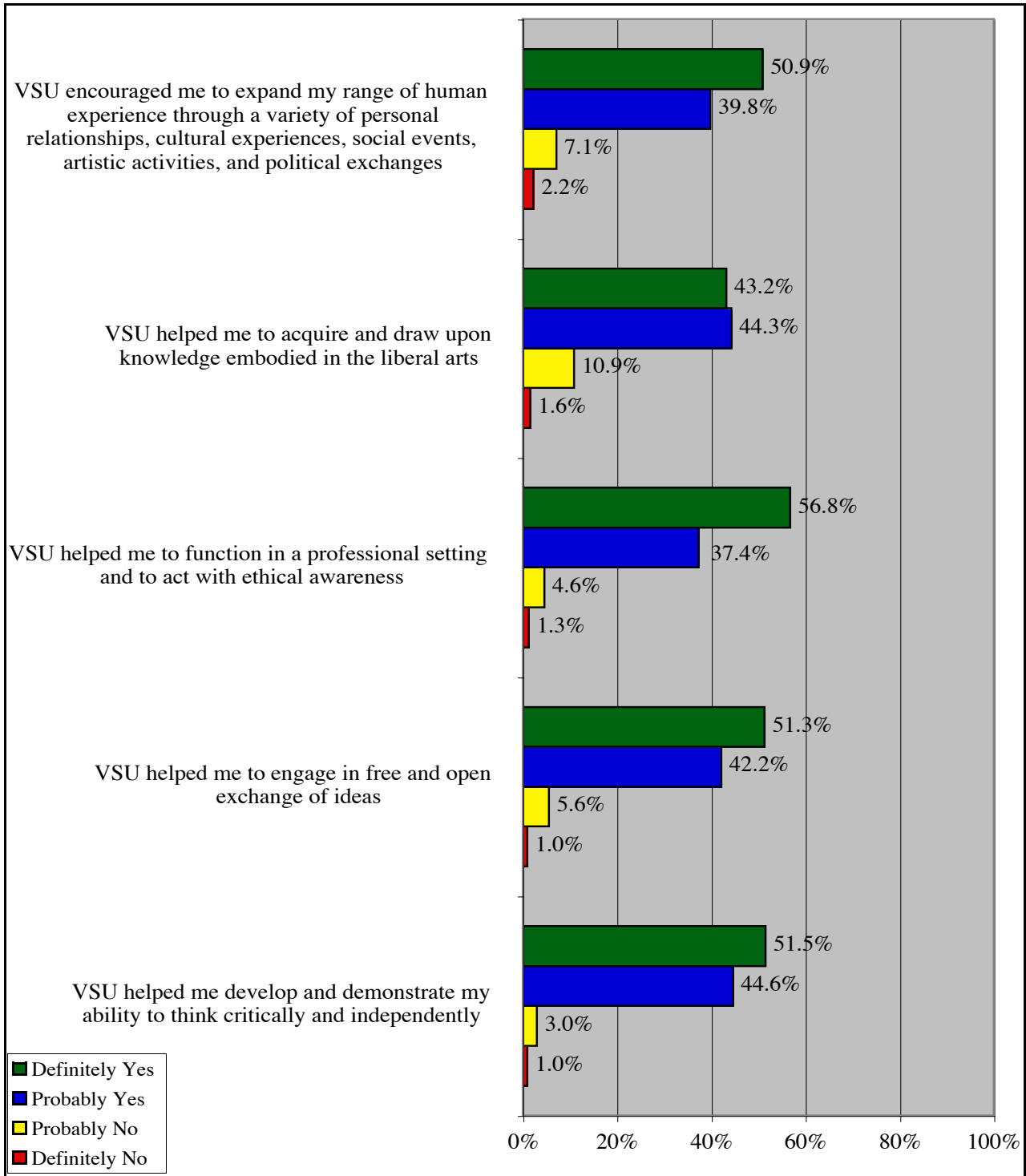
- 705 attended VSU for 3 or more years.
- 197 attended VSU for 2 years.
- 35 attended VSU for only 1 year.

Overall Graduate GPA

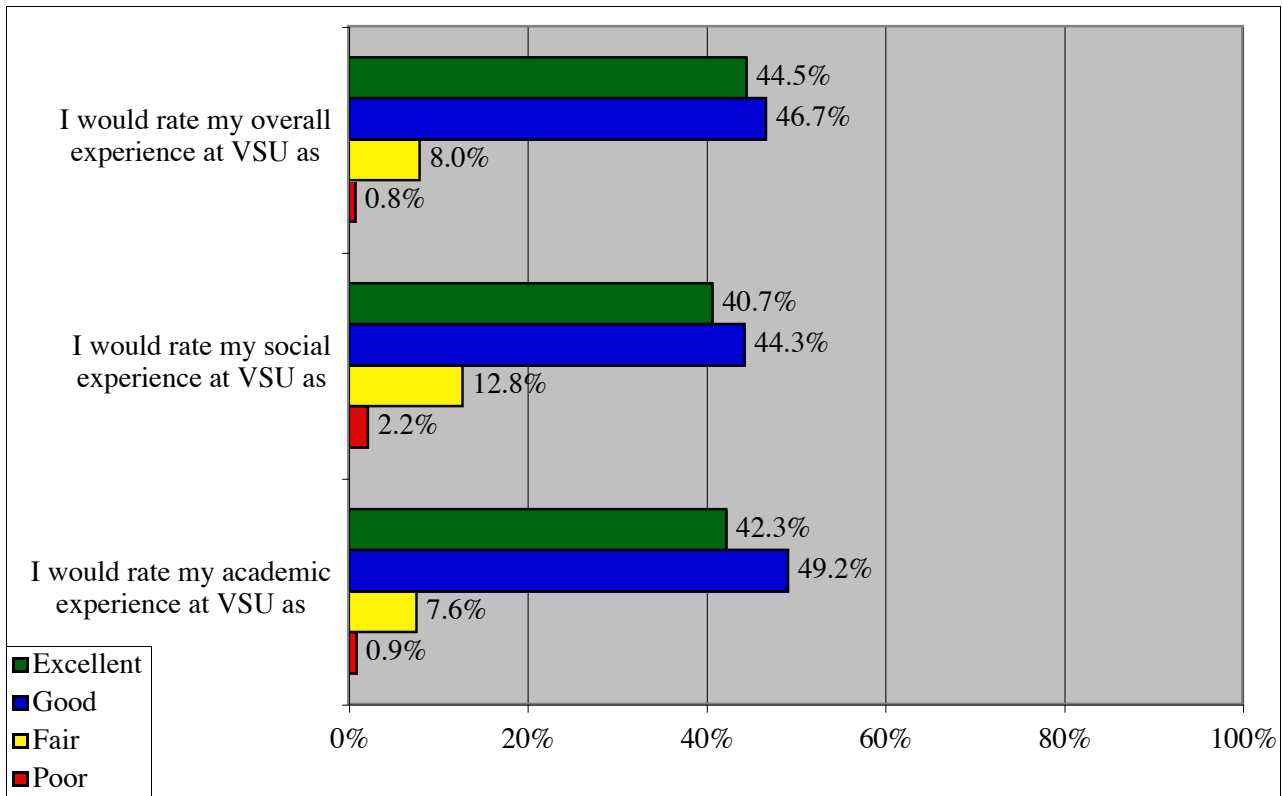


- 212 seniors reported earning a GPA of over 3.50 in their program.

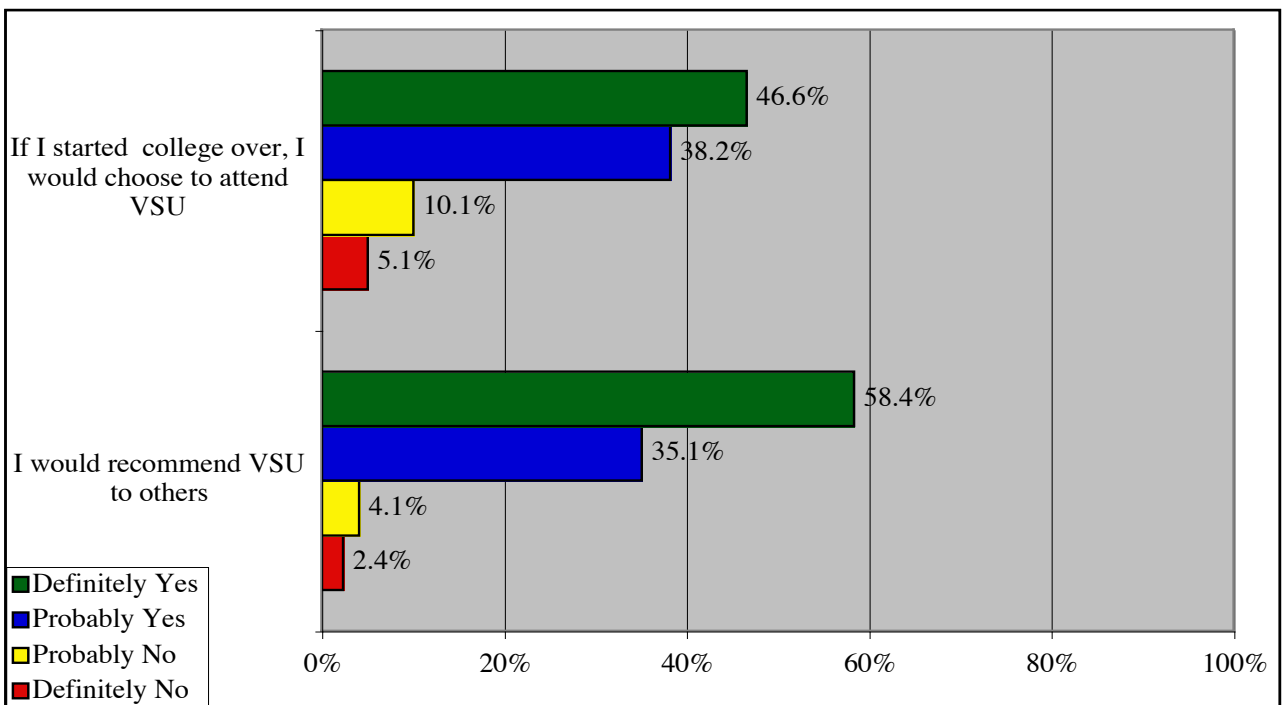
Atmosphere for Learning



VSU Experiences

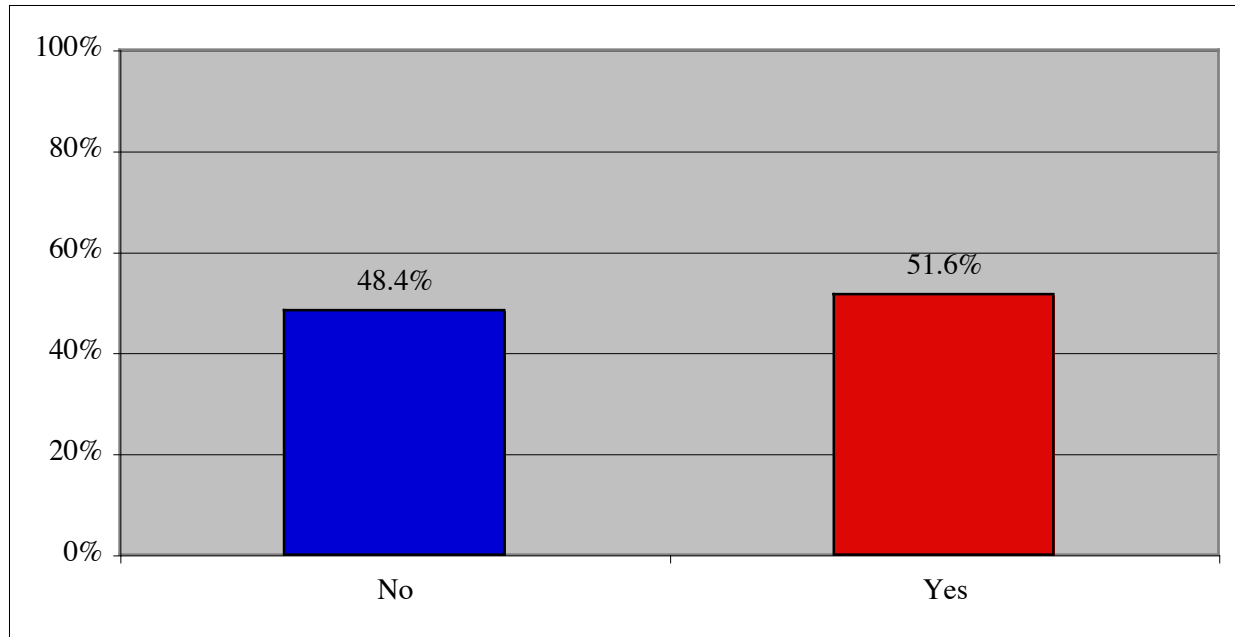


Would recommend or choose to attend VSU again

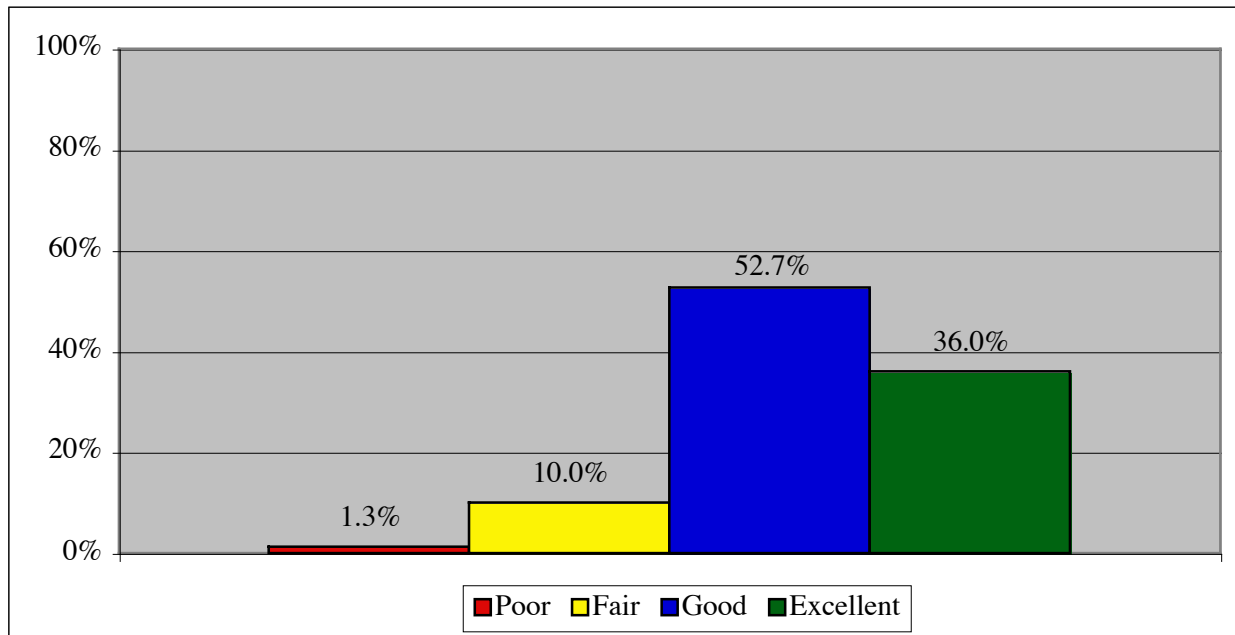


University Services and Facilities: Use and Quality Ratings

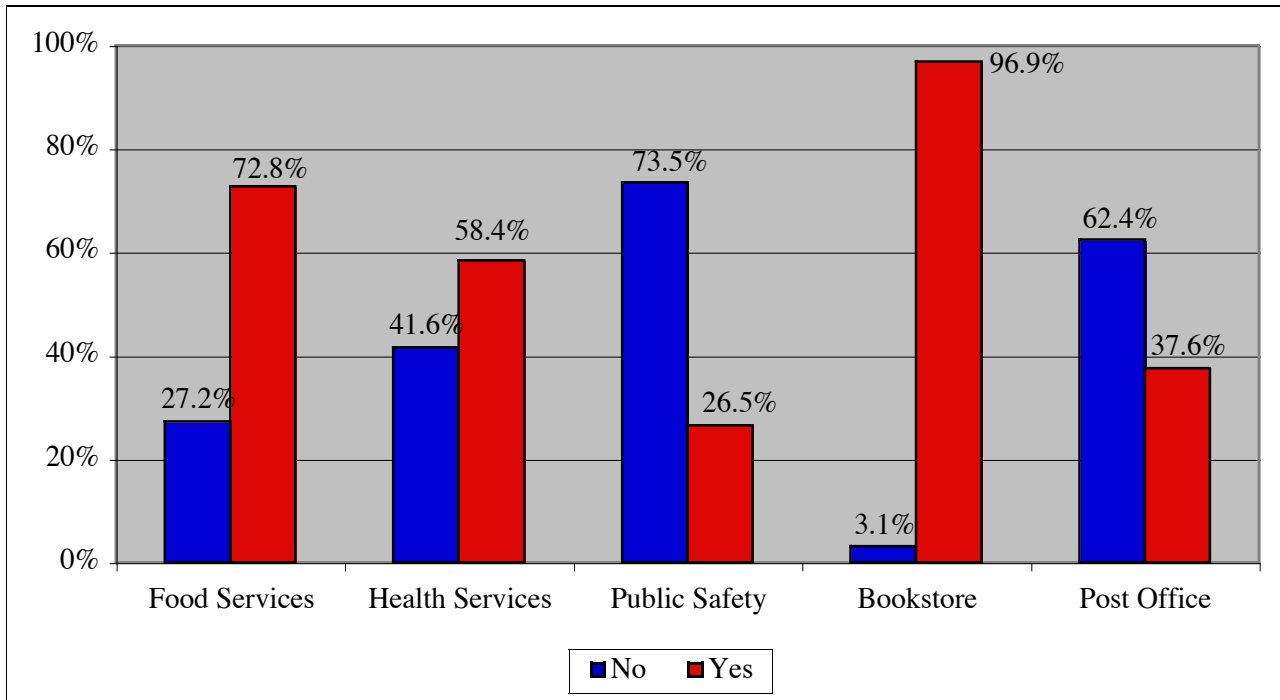
Use of Clubs and Student Organizations



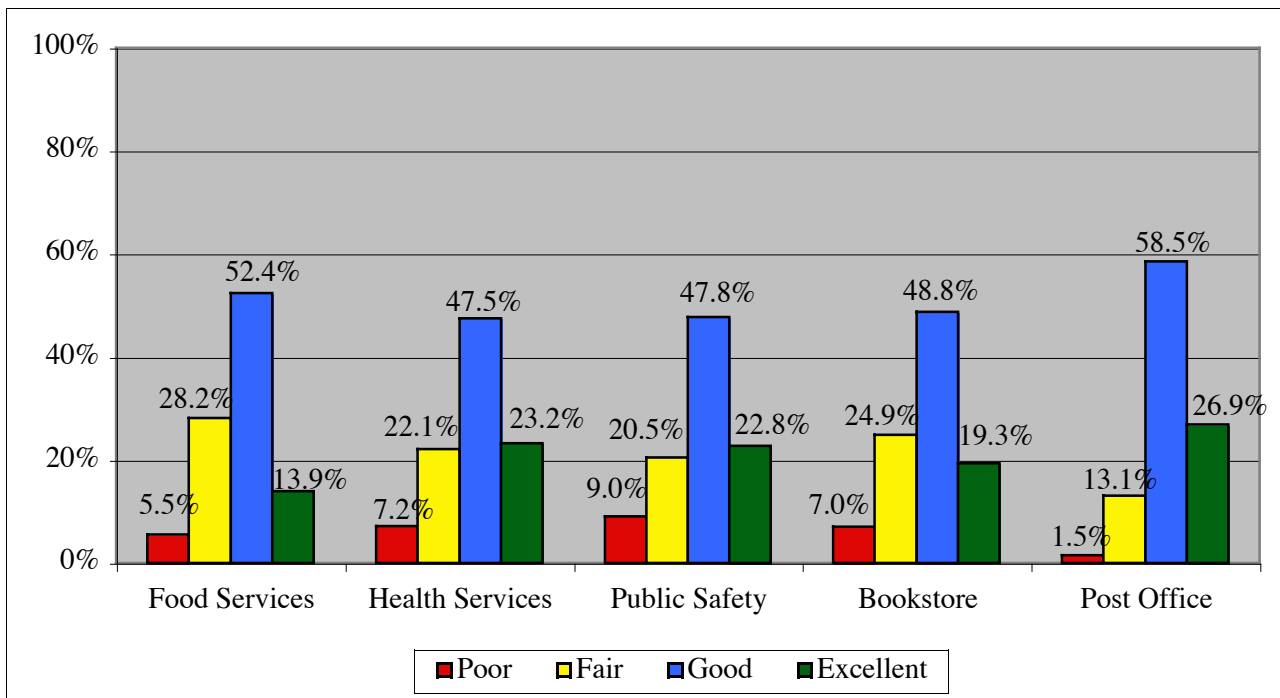
Quality of Clubs and Student Organizations



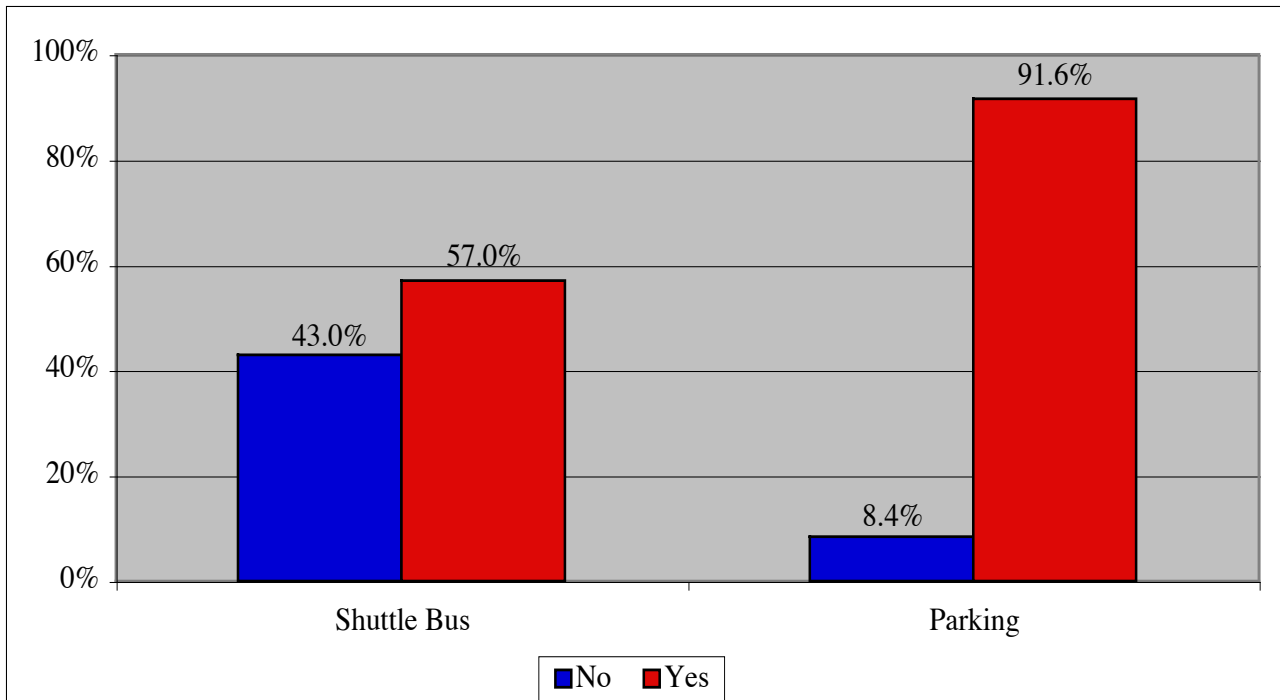
Use of On-Campus Services



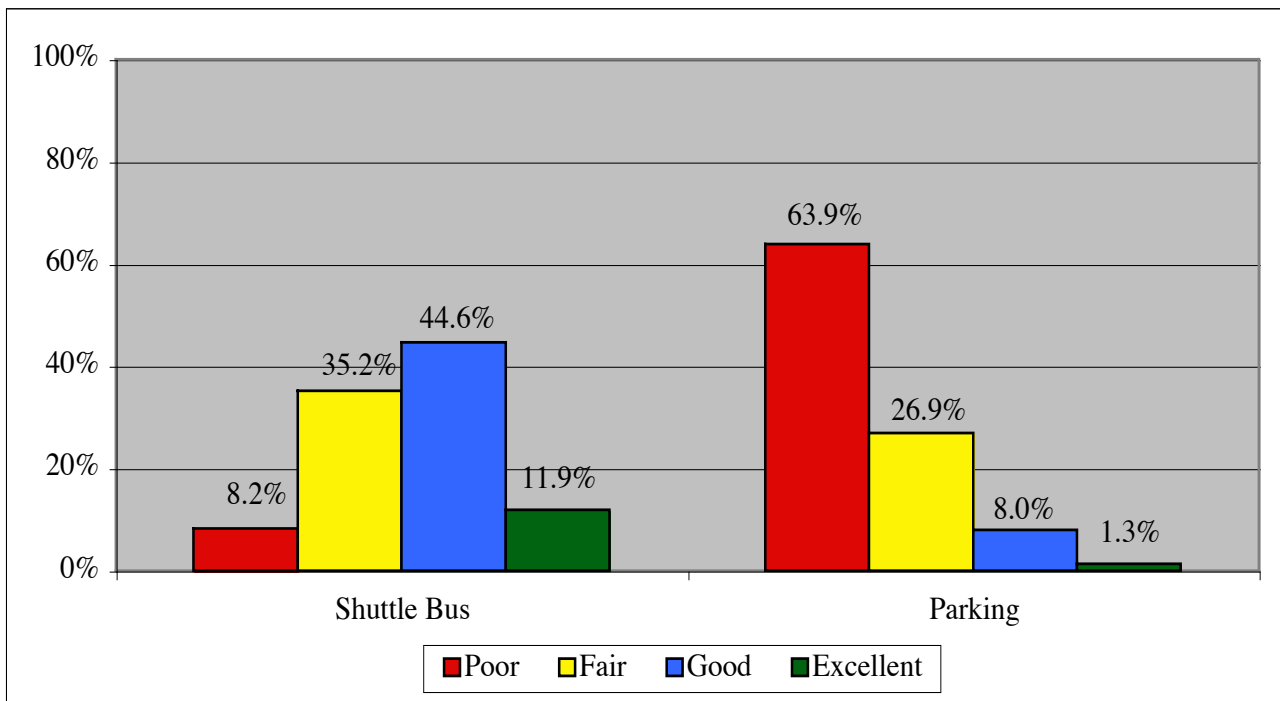
Quality of On-Campus Services



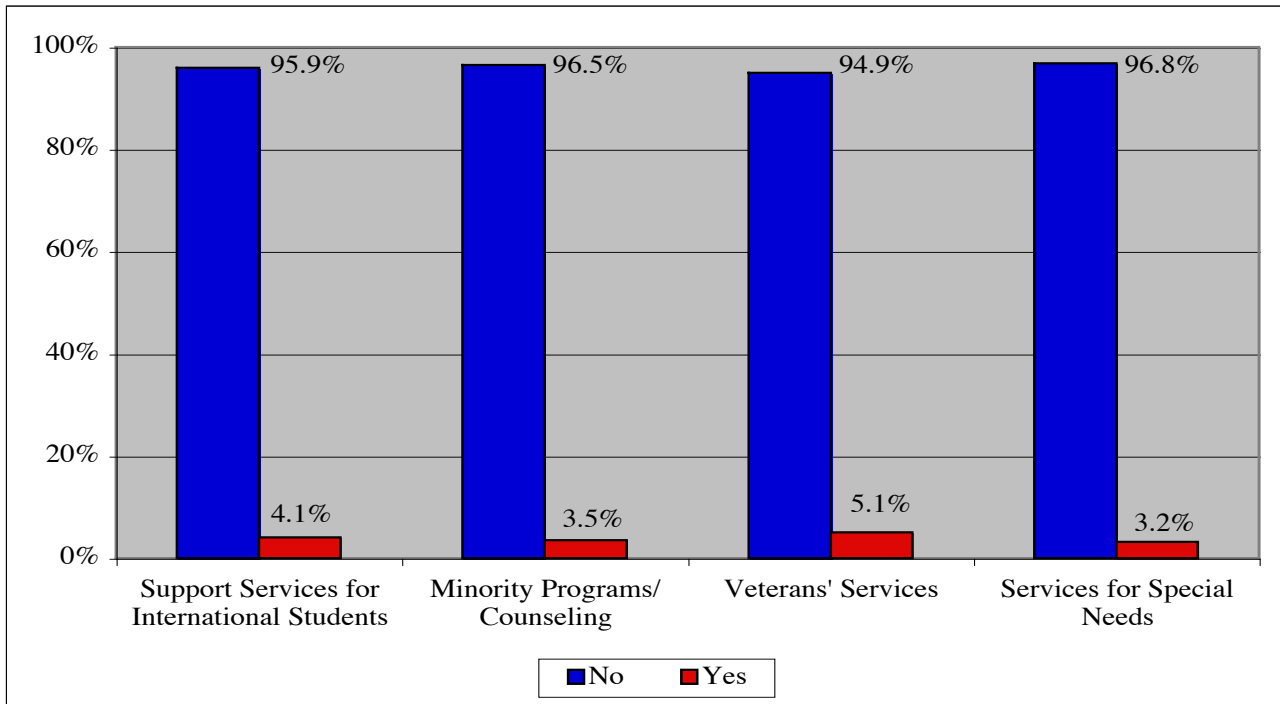
Use of Transportation Services



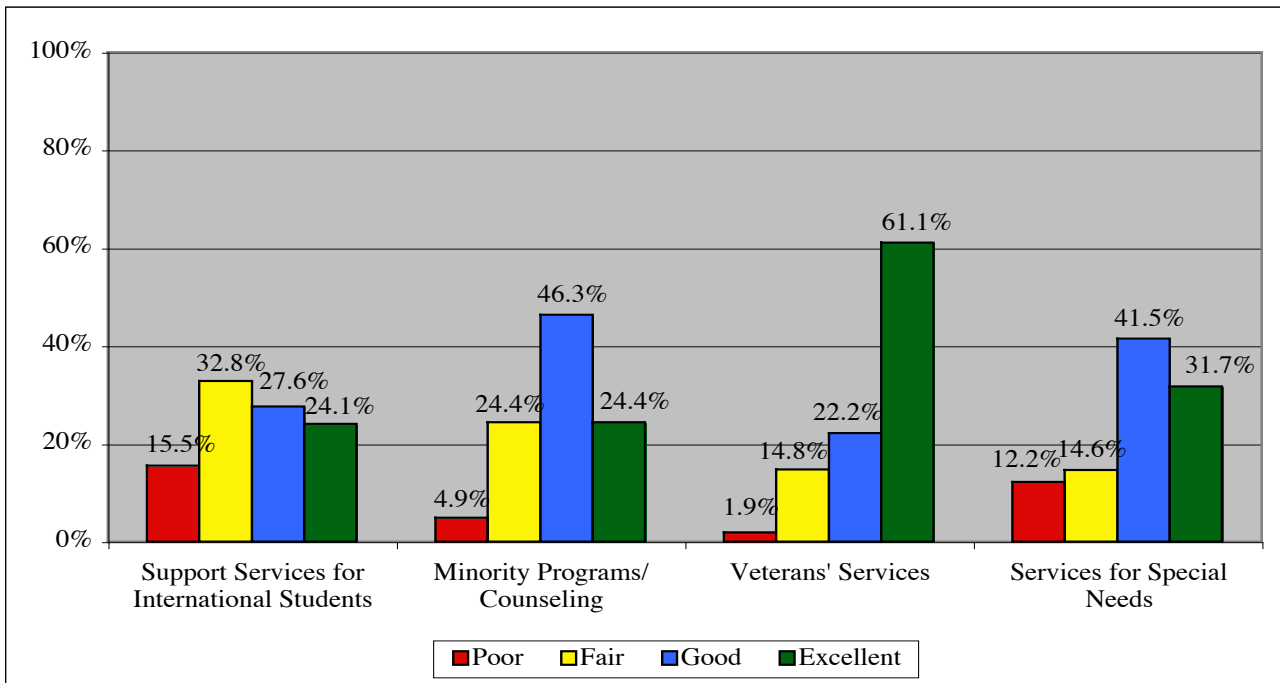
Quality of Transportation Services



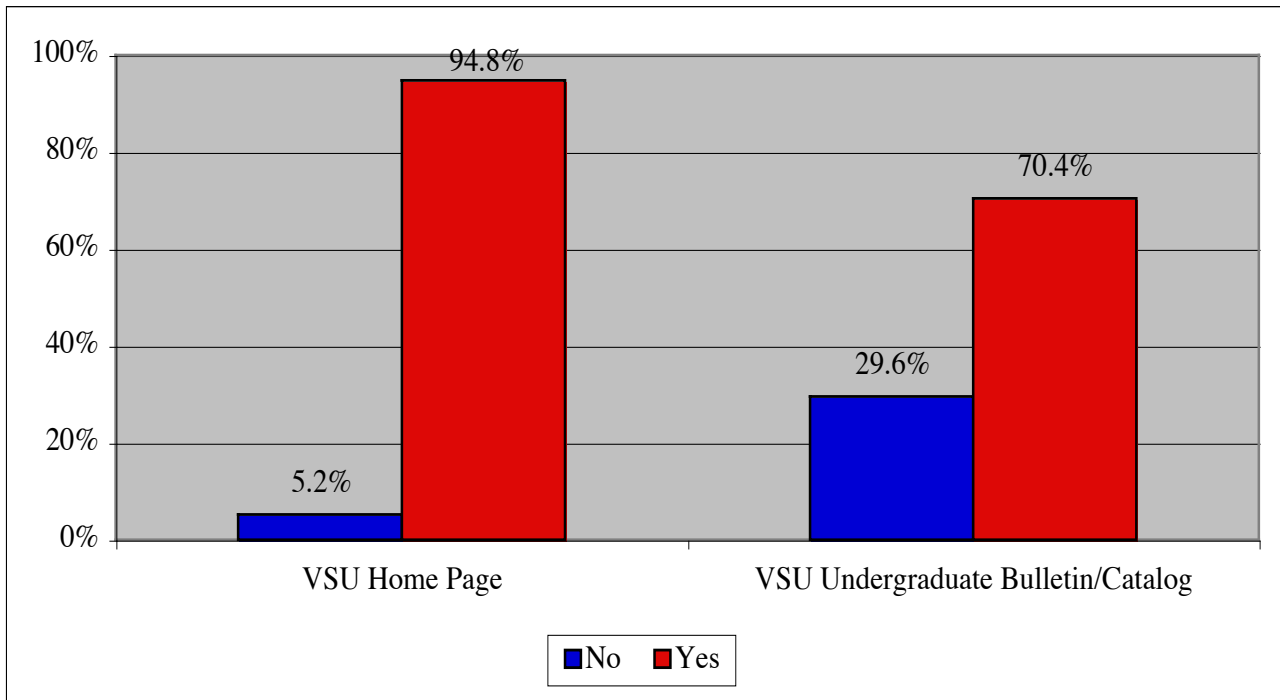
Use of Specialized Student Services



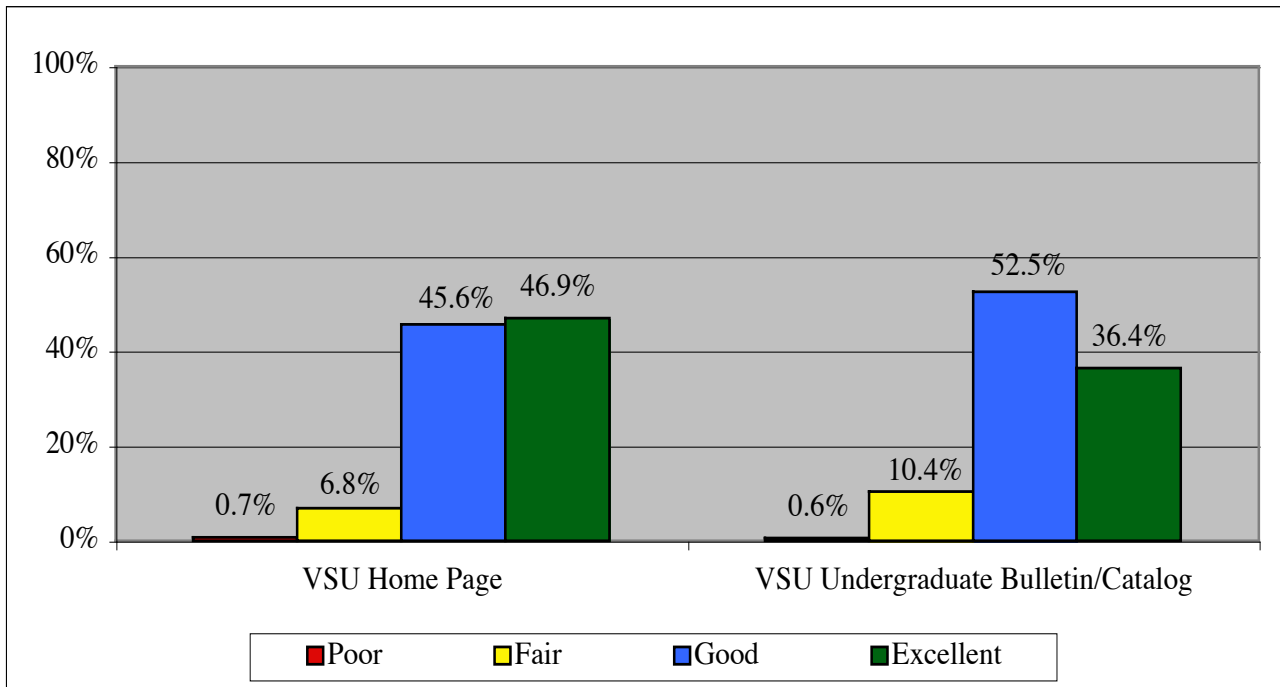
Quality of Specialized Student Services



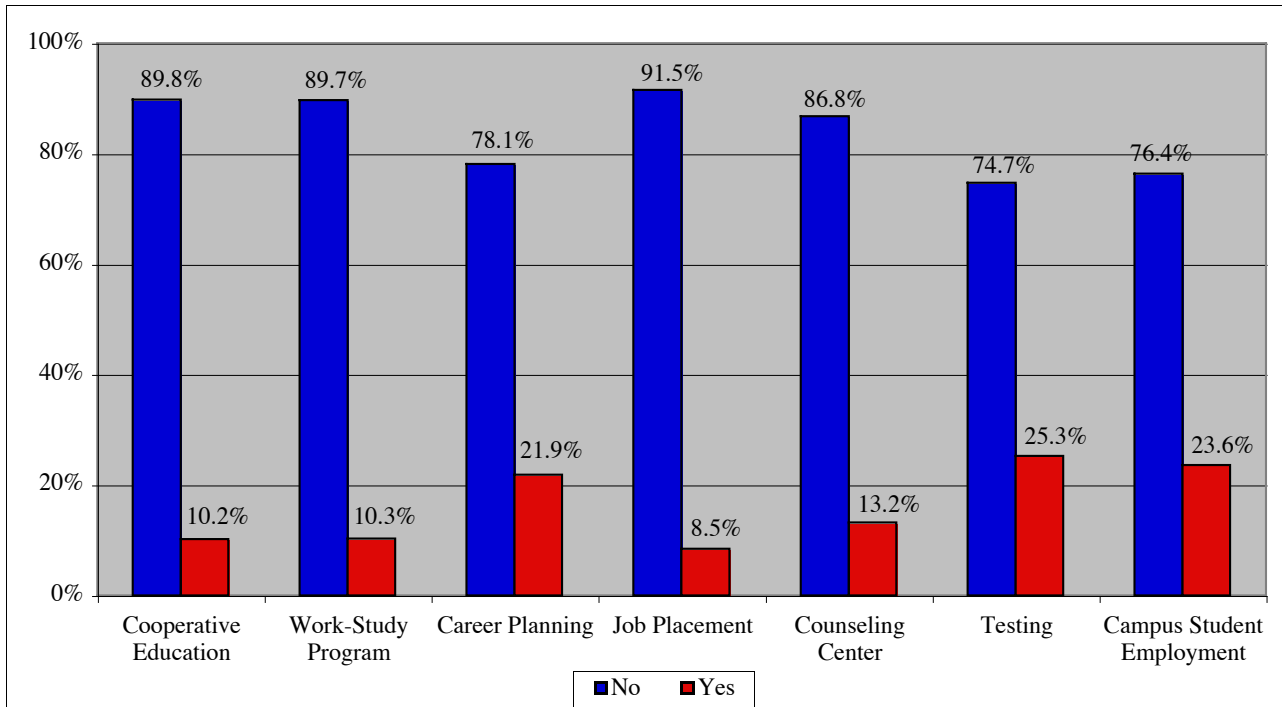
Use of University Information Services



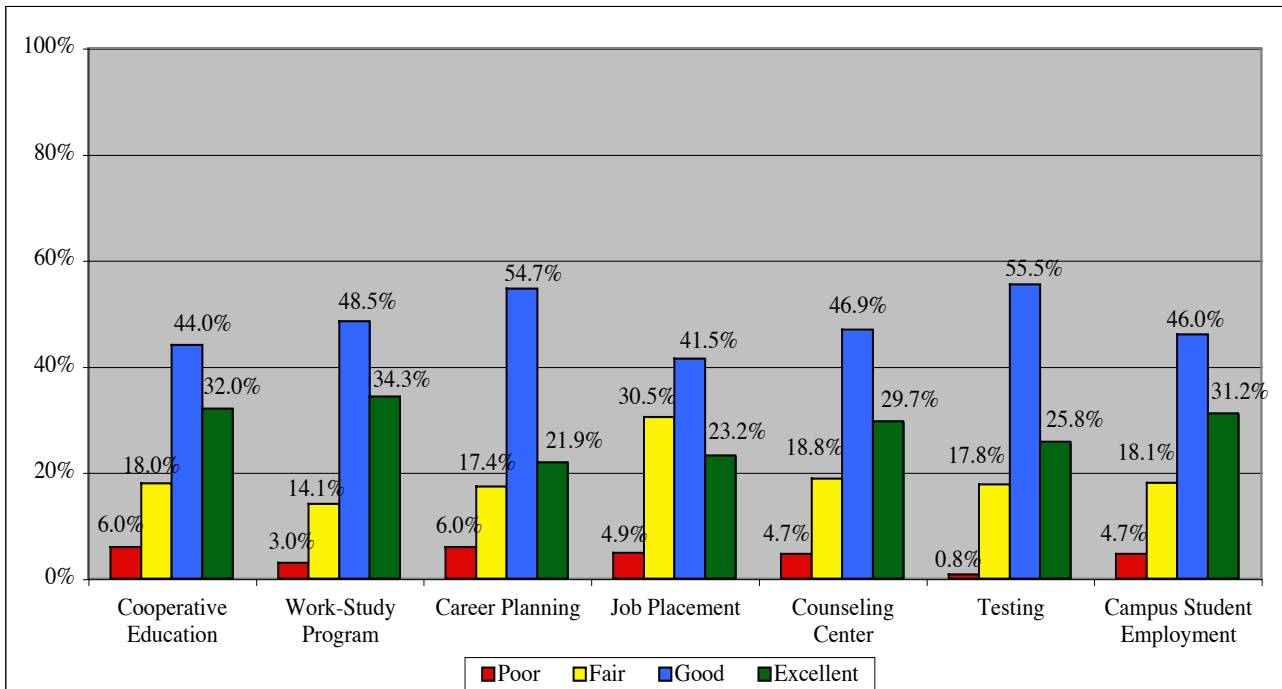
Quality of University Information Services



Use of Career Preparation Services

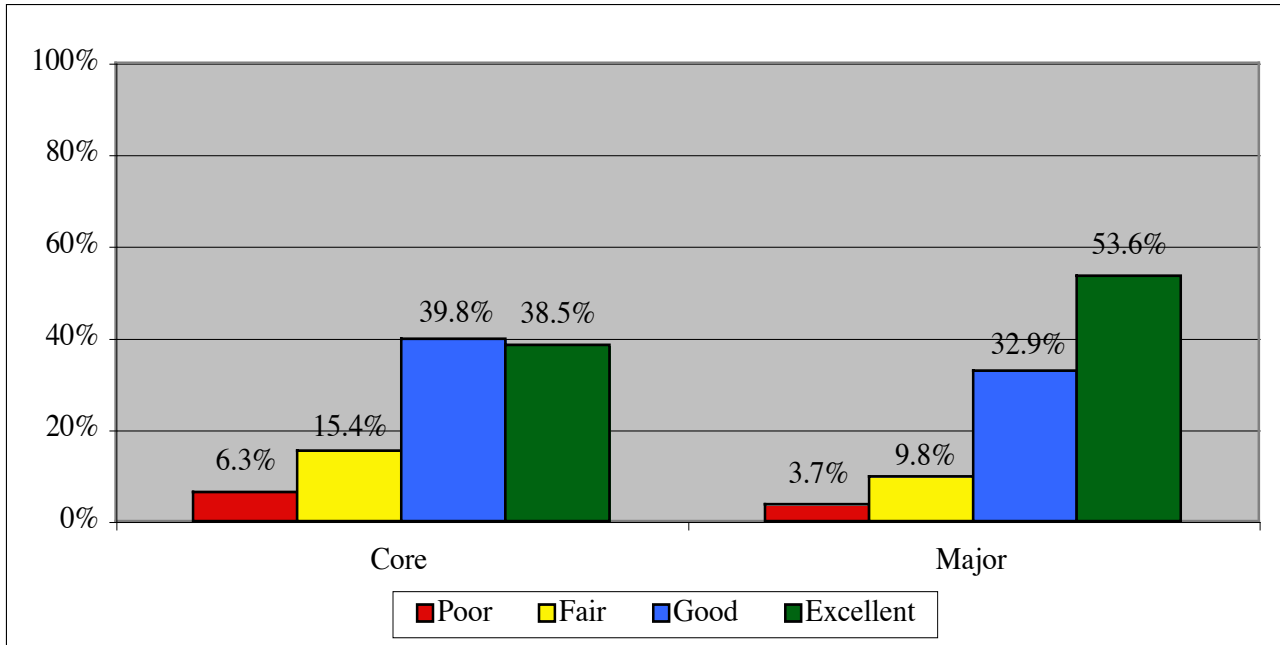


Quality of Career Preparation Services

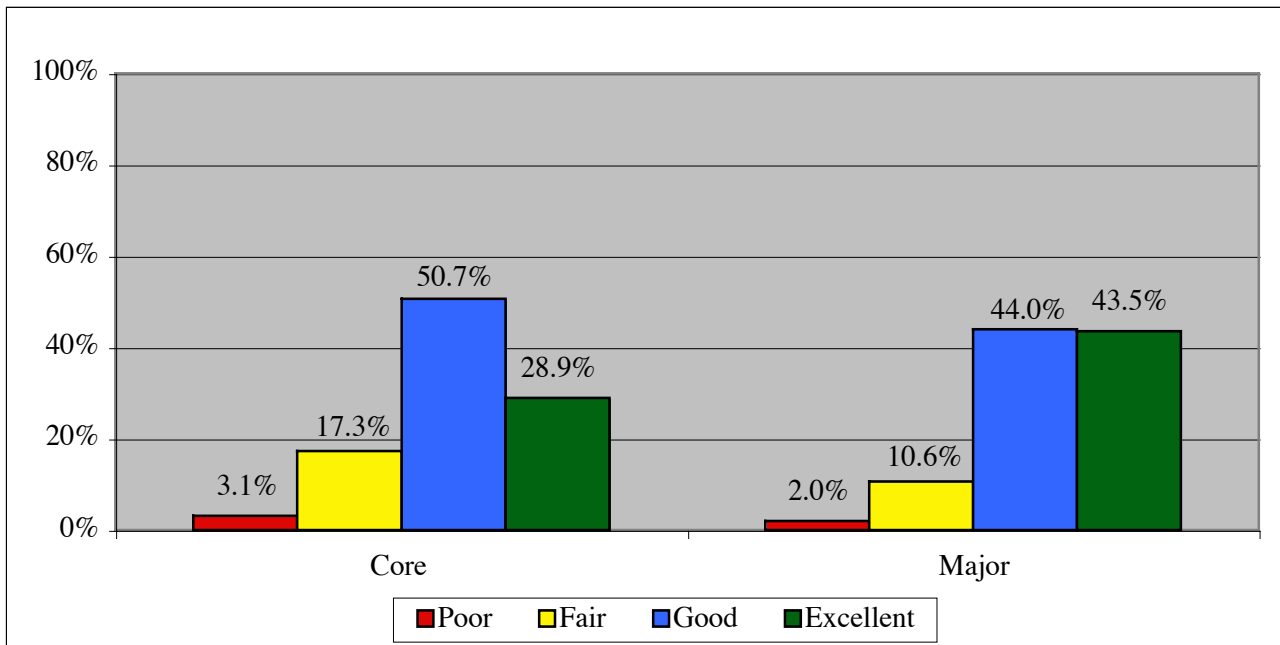


Core and Major Academic Experiences: Use and Quality Ratings

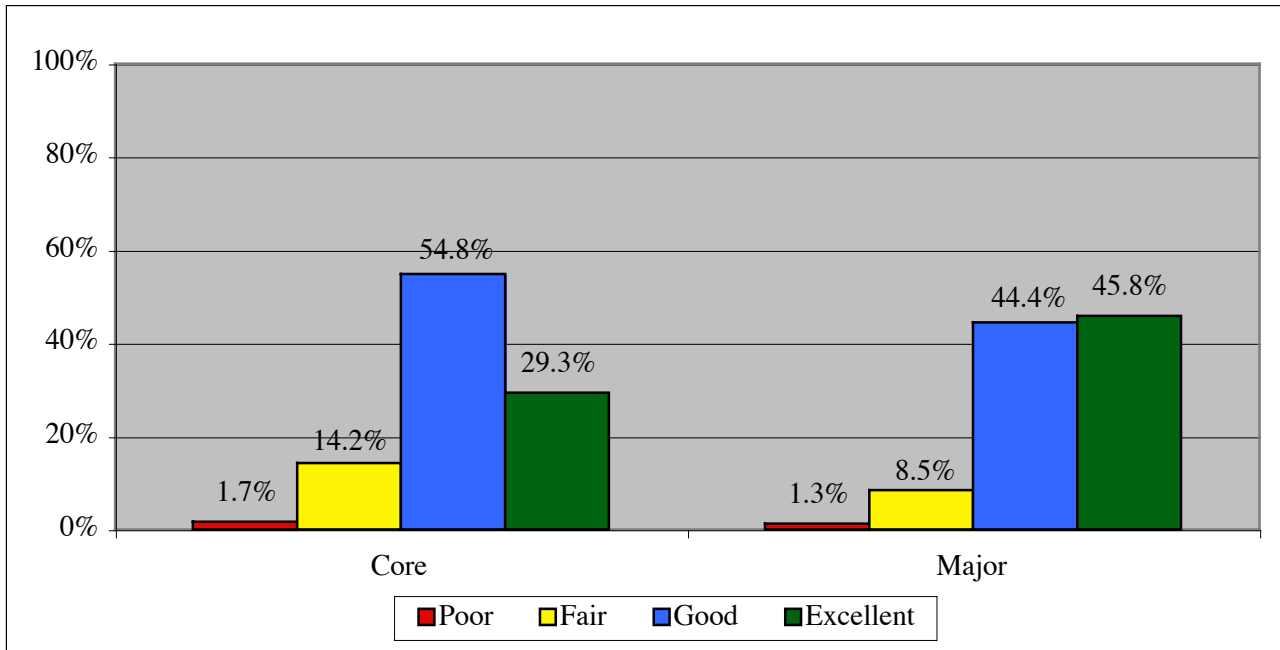
Helpfulness of academic advisor



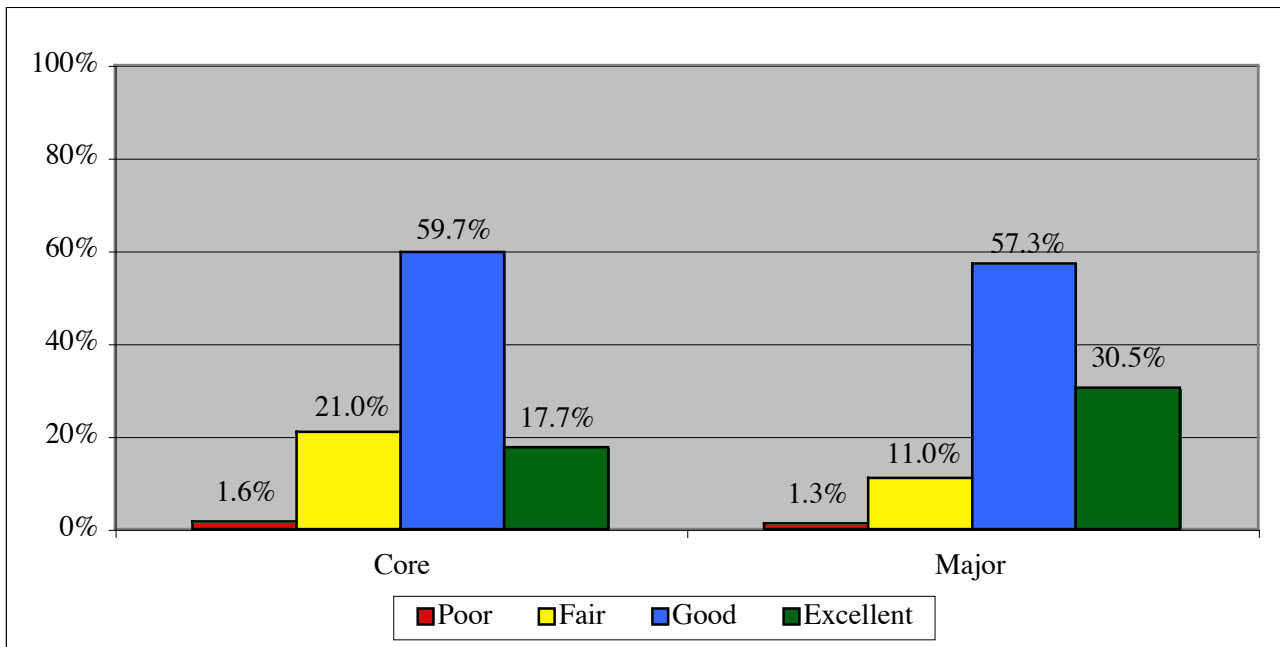
Overall attitude of faculty toward students



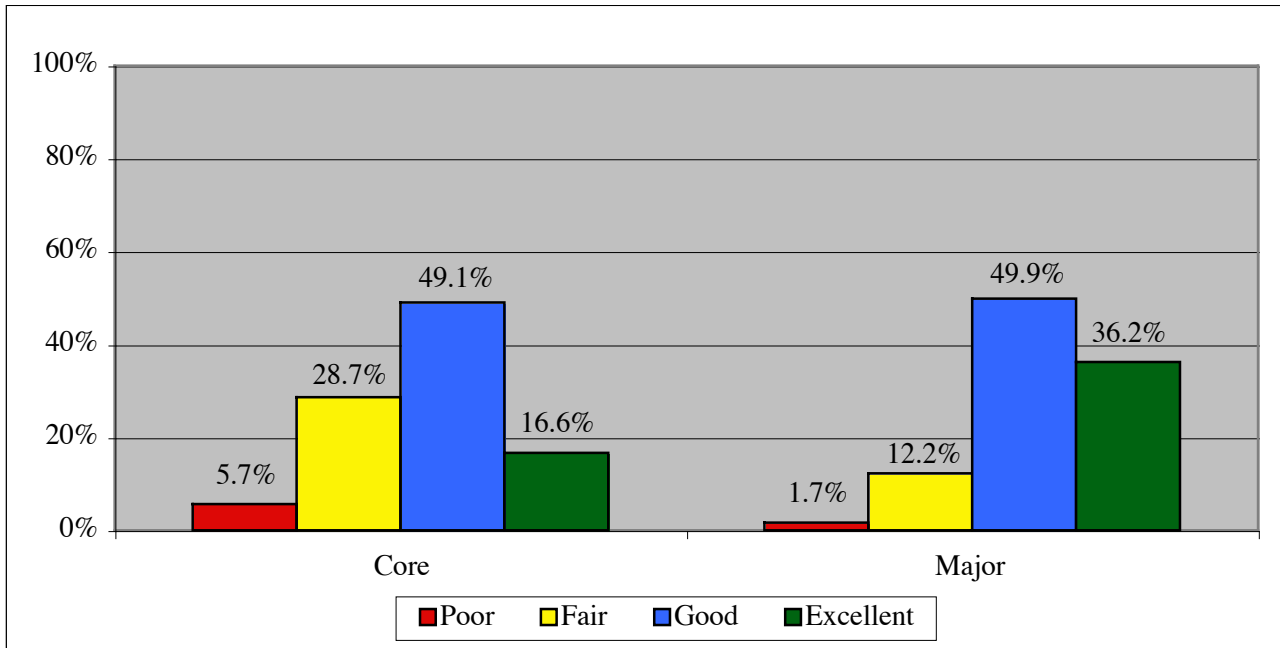
Overall quality of faculty



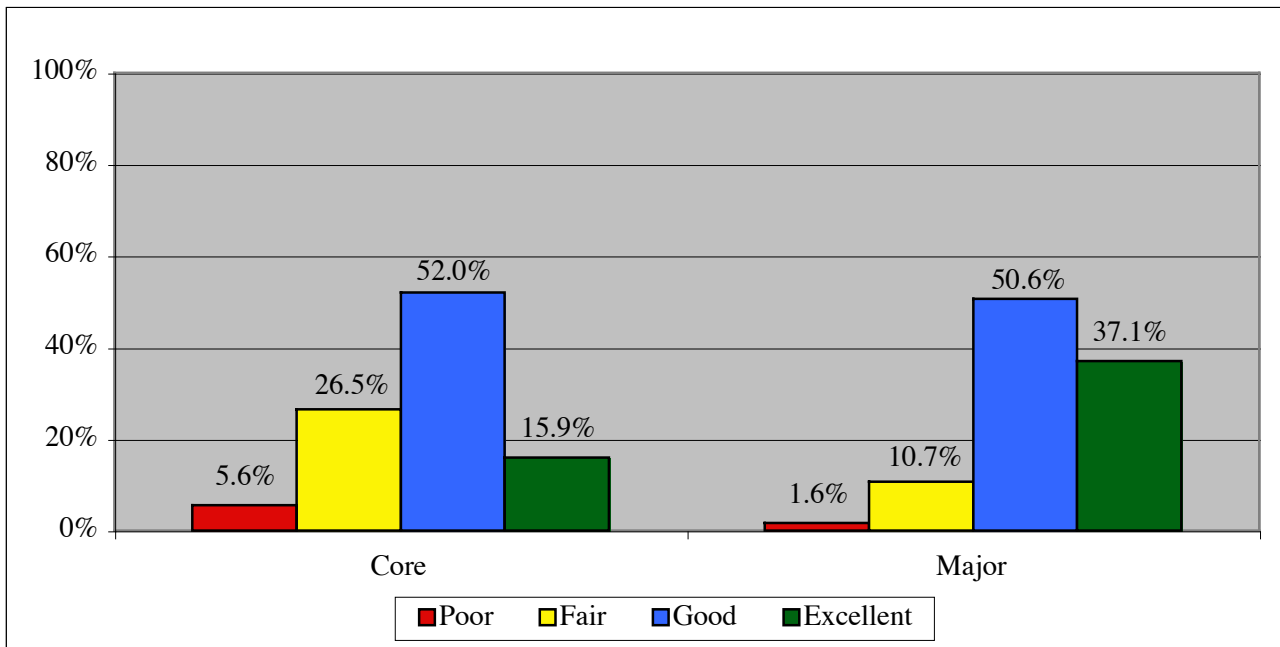
Courses as preparation for liberal education



Courses as preparation for initial employment



Courses as preparation for graduate school



Seniors' Ratings of the University's Services and Facilities

University Services and Facilities Responses of All Seniors	n	Mean	Std. Deviation	Quality of Service			
				Excellent	Good	Fair	Poor
1. Housing & residence halls	327	2.45	0.77	7%	39%	44%	10%
2. Sororities & fraternities	173	3.43	0.71	56%	33%	11%	1%
3. Clubs & student organizations	461	3.23	0.68	36%	53%	10%	1%
4. Intramural program & services	263	3.21	0.68	34%	53%	11%	1%
5. Athletic and recreation facilities	623	3.60	0.56	64%	33%	3%	0%
6. VSU Undergraduate Bulletin/Catalog	632	3.25	0.66	36%	53%	10%	1%
7. VSU Food Services	660	2.75	0.76	14%	52%	28%	6%
8. Support services for international students	58	2.60	1.03	24%	28%	33%	16%
9. Parking	855	1.47	0.70	1%	8%	27%	64%
10. Shuttle bus services	522	2.60	0.80	12%	45%	35%	8%
11. Cooperative education program	100	3.02	0.86	32%	44%	18%	6%
12. University work-study program	99	3.14	0.77	34%	49%	14%	3%
13. Campus student employment	215	3.04	0.83	31%	46%	18%	5%
14. Career planning services	201	2.93	0.79	22%	55%	17%	6%
15. Job placement services	82	2.83	0.84	23%	42%	31%	5%
16. Counseling center services	128	3.02	0.82	30%	47%	19%	5%
17. Testing services	236	3.06	0.68	26%	56%	18%	1%
18. Minority programs/counseling	41	2.90	0.83	24%	46%	24%	5%
19. Veterans services	54	3.43	0.82	61%	22%	15%	2%
20. Public safety services	268	2.84	0.88	23%	48%	21%	9%
21. Bookstore	880	2.80	0.83	19%	49%	25%	7%
22. Post Office	335	3.11	0.67	27%	59%	13%	2%
23. Handicapped accessibility for VSU facilities	42	2.74	0.91	21%	41%	29%	10%
24. Services for special needs	41	2.93	0.99	32%	42%	15%	12%
25. Health services	526	2.87	0.85	23%	48%	22%	7%
26. VSU Home page	894	3.39	0.64	47%	46%	7%	1%

Note: Percentages may not total 100% due to rounding.

Seniors' Ratings of their Academic Experiences in the Core Curriculum

Academic Experiences Core Curriculum -- All Seniors	n	Mean	Std. Deviation	Quality of Experience			
				Excellent	Good	Fair	Poor
VSU Personnel Support							
1. Availability of academic advisor	758	3.17	0.83	40%	41%	15%	4%
2. Helpfulness of academic advisor	748	3.11	0.88	39%	40%	15%	6%
3. Helpfulness of departmental office staff	717	3.07	0.78	31%	49%	17%	3%
4. Opportunities for interaction with faculty	734	3.04	0.78	30%	48%	19%	3%
5. Attitude of faculty toward students	764	3.05	0.77	29%	51%	17%	3%
6. Overall quality of faculty	765	3.12	0.70	29%	55%	14%	2%
VSU Instructional Support							
7. Courses as preparation for liberal education	620	2.94	0.67	18%	60%	21%	2%
8. Courses as preparation for initial employment	634	2.76	0.79	17%	49%	29%	6%
9. Courses as preparation for graduate school	573	2.78	0.78	16%	52%	27%	6%
10. Ease of getting into required courses	735	2.83	0.81	20%	48%	26%	6%
11. Ease of getting into elective courses	724	2.93	0.74	22%	52%	24%	2%
12. Organization of the curriculum for your major	729	2.93	0.72	19%	58%	20%	3%
13. Quality of instruction	735	2.99	0.66	20%	61%	18%	1%
14. Fairness of grading	738	2.99	0.68	21%	58%	19%	2%
15. Practicum or internship experiences	339	3.05	0.75	28%	52%	18%	3%
16. Study abroad experiences	170	3.08	0.81	32%	48%	15%	5%
17. Appearance of printed information about program	610	2.93	0.74	20%	56%	21%	3%
18. Usefulness of printed information about program	595	2.94	0.72	20%	56%	21%	3%
19. Availability of research support	534	2.88	0.76	20%	53%	24%	4%
20. Usefulness of research support	526	2.87	0.75	19%	53%	25%	3%
VSU Facilities							
21. Quality of distance learning courses	239	2.94	0.75	22%	52%	23%	3%
22. Library collection/resources	691	3.19	0.70	34%	52%	12%	2%
23. Library facilities	714	3.34	0.67	44%	47%	8%	1%
24. Computer lab facilities	703	3.31	0.66	41%	50%	8%	1%
25. Computer lab availability	715	3.14	0.78	35%	48%	14%	4%
26. Classroom facilities	709	3.10	0.67	27%	57%	15%	1%
27. Laboratory facilities (not computer)	643	3.14	0.68	30%	56%	13%	1%

Note: Percentages may not total 100% due to rounding.

Seniors' Ratings of their Academic Experiences in the Major Field of Study

Academic Experiences Major Curriculum -- All Seniors	n	Mean	Std. Deviation	Quality of Experience			
				Excellent	Good	Fair	Poor
VSU Personnel Support							
1. Availability of academic advisor	911	3.38	0.79	54%	34%	9%	3%
2. Helpfulness of academic advisor	909	3.36	0.81	54%	33%	10%	4%
3. Helpfulness of departmental office staff	886	3.25	0.76	42%	43%	12%	3%
4. Opportunities for interaction with faculty	883	3.33	0.71	46%	43%	10%	1%
5. Attitude of faculty toward students	909	3.29	0.73	44%	44%	11%	2%
6. Overall quality of faculty	899	3.35	0.69	46%	44%	9%	1%
VSU Instructional Support							
7. Courses as preparation for liberal education	709	3.17	0.66	31%	57%	11%	1%
8. Courses as preparation for initial employment	771	3.21	0.71	36%	50%	12%	2%
9. Courses as preparation for graduate school	699	3.23	0.70	37%	51%	11%	2%
10. Ease of getting into required courses	861	3.03	0.87	33%	43%	17%	6%
11. Ease of getting into elective courses	818	3.17	0.74	35%	50%	13%	2%
12. Organization of the curriculum for your major	857	3.13	0.73	31%	52%	14%	2%
13. Quality of instruction	852	3.25	0.67	37%	52%	10%	1%
14. Fairness of grading	871	3.19	0.70	35%	51%	13%	2%
15. Practicum or internship experiences	544	3.26	0.75	42%	45%	11%	3%
16. Study abroad experiences	211	3.32	0.69	43%	47%	9%	1%
17. Appearance of printed information about program	758	3.14	0.71	31%	53%	15%	2%
18. Usefulness of printed information about program	758	3.11	0.72	30%	53%	15%	2%
19. Availability of research support	649	3.11	0.75	31%	51%	15%	3%
20. Usefulness of research support	637	3.10	0.74	30%	52%	15%	2%
VSU Facilities							
21. Quality of distance learning courses	312	3.11	0.72	30%	52%	15%	2%
22. Library collection/resources	792	3.24	0.72	38%	50%	10%	2%
23. Library facilities	813	3.39	0.64	47%	47%	6%	1%
24. Computer lab facilities	824	3.39	0.68	48%	45%	6%	2%
25. Computer lab availability	827	3.21	0.78	40%	45%	11%	4%
26. Classroom facilities	842	3.17	0.70	33%	52%	13%	2%
27. Laboratory facilities (not computer)	656	3.17	0.73	33%	53%	11%	3%

Note: Percentages may not total 100% due to rounding.

Seniors' Ratings of Academic Program by College - Arts and Sciences

	n	Mean	Std. Deviation	Quality of Experience			
				Excellent	Good	Fair	Poor
VSU Personnel Support							
1. Availability of academic advisor	244	3.35	.81	53%	34%	10%	4%
2. Helpfulness of academic advisor	242	3.31	.85	52%	31%	12%	4%
3. Helpfulness of departmental office staff	239	3.24	.74	41%	44%	14%	1%
4. Opportunities for interaction with faculty	237	3.29	.65	40%	49%	11%	0%
5. Attitude of faculty toward students	239	3.21	.72	38%	47%	14%	1%
6. Overall quality of faculty	239	3.27	.69	40%	48%	11%	1%
VSU Instructional Support							
7. Courses as preparation for liberal education	193	3.16	.69	32%	54%	12%	2%
8. Courses as preparation for initial employment	196	2.97	.80	26%	50%	19%	5%
9. Courses as preparation for graduate school	190	3.14	.77	34%	49%	14%	3%
10. Ease of getting into required courses	229	3.02	.86	32%	43%	20%	5%
11. Ease of getting into elective courses	226	3.11	.79	34%	47%	16%	4%
12. Organization of the curriculum for your major	222	3.08	.74	29%	53%	15%	3%
13. Quality of instruction	228	3.21	.69	35%	54%	10%	2%
14. Fairness of grading	230	3.17	.74	36%	47%	15%	2%
15. Practicum or internship experiences	113	3.17	.73	35%	50%	14%	2%
16. Study abroad experiences	65	3.23	.70	37%	51%	11%	2%
17. Appearance of printed information about program	191	3.09	.71	29%	53%	16%	2%
18. Usefulness of printed information about program	194	3.06	.71	26%	57%	15%	3%
19. Availability of research support	177	3.07	.75	29%	50%	18%	2%
20. Usefulness of research support	168	3.10	.70	29%	54%	17%	1%
VSU Facilities							
21. Quality of distance learning courses	74	3.01	.71	26%	50%	24%	0%
22. Library collection/resources	225	3.22	.71	36%	51%	10%	2%
23. Library facilities	225	3.32	.64	41%	52%	7 %	1%
24. Computer lab facilities	228	3.37	.63	45%	49%	6%	1%
25. Computer lab availability	229	3.26	.72	41%	47%	11%	2%
26. Classroom facilities	231	3.24	.64	34%	56%	9%	1%
27. Laboratory facilities (not computer)	183	3.19	.70	33%	55%	9%	3%

Note: Percentages may not total 100% due to rounding.

Seniors' Ratings of Academic Program by College - Business Administration

	n	Mean	Std. Deviation	Quality of Experience			
				Excellent	Good	Fair	Poor
VSU Personnel Support							
1. Availability of academic advisor	92	3.34	.83	52%	34%	10%	4%
2. Helpfulness of academic advisor	92	3.30	.86	52%	30%	13%	4%
3. Helpfulness of departmental office staff	89	3.28	.71	42%	46%	11%	1%
4. Opportunities for interaction with faculty	93	3.27	.74	42%	45%	11%	2%
5. Attitude of faculty toward students	91	3.29	.75	43%	46%	8%	3%
6. Overall quality of faculty	90	3.38	.71	49%	42%	7%	2%
VSU Instructional Support							
7. Courses as preparation for liberal education	70	2.90	.73	17%	60%	19%	4%
8. Courses as preparation for initial employment	84	3.18	.68	32%	55%	12%	1%
9. Courses as preparation for graduate school	69	3.14	.73	33%	49%	16%	1%
10. Ease of getting into required courses	89	3.09	.72	29%	52%	18%	1%
11. Ease of getting into elective courses	90	3.09	.71	28%	56%	14%	2%
12. Organization of the curriculum for your major	89	3.11	.68	28%	56%	15%	1%
13. Quality of instruction	87	3.20	.68	33%	54%	12%	1%
14. Fairness of grading	90	3.11	.68	27%	60%	11%	2%
15. Practicum or internship experiences	34	3.00	.89	32%	41%	21%	6%
16. Study abroad experiences	26	3.15	.73	35%	46%	19%	0%
17. Appearance of printed information about program	75	3.03	.70	24%	56%	19%	1%
18. Usefulness of printed information about program	74	3.01	.71	24%	54%	20%	1%
19. Availability of research support	67	3.15	.70	31%	54%	13%	2%
20. Usefulness of research support	66	3.11	.70	29%	55%	15%	2%
VSU Facilities							
21. Quality of distance learning courses	34	3.03	.72	27%	50%	24%	0%
22. Library collection/resources	79	3.28	.66	39%	49%	11%	0%
23. Library facilities	85	3.36	.61	44%	49%	7%	0%
24. Computer lab facilities	88	3.35	.66	46%	44%	10%	0%
25. Computer lab availability	89	3.10	.89	40%	34%	21%	5%
26. Classroom facilities	90	2.99	.71	22%	57%	19%	2%
27. Laboratory facilities (not computer)	59	3.05	.73	27%	53%	19%	2%

Note: Percentages may not total 100% due to rounding.

Seniors' Ratings of Academic Program by College - Arts

	n	Mean	Std. Deviation	Quality of Experience			
				Excellent	Good	Fair	Poor
VSU Personnel Support							
1. Availability of academic advisor	115	3.61	.60	66%	30%	4%	1%
2. Helpfulness of academic advisor	113	3.47	.70	57%	35%	6%	2%
3. Helpfulness of departmental office staff	113	3.39	.66	48%	44%	7%	1%
4. Opportunities for interaction with faculty	108	3.66	.60	71%	24%	4%	1%
5. Attitude of faculty toward students	115	3.51	.65	58%	37%	4%	2%
6. Overall quality of faculty	113	3.58	.61	64%	32%	4%	1%
VSU Instructional Support							
7. Courses as preparation for liberal education	103	3.28	.62	37%	54%	9%	0%
8. Courses as preparation for initial employment	105	3.30	.69	42%	47%	11%	1%
9. Courses as preparation for graduate school	91	3.22	.71	36%	52%	10%	2%
10. Ease of getting into required courses	109	2.97	.96	34%	39%	17%	10%
11. Ease of getting into elective courses	108	3.20	.75	38%	46%	14%	2%
12. Organization of the curriculum for your major	109	3.18	.70	34%	51%	14%	1%
13. Quality of instruction	107	3.32	.67	42%	49%	8%	1%
14. Fairness of grading	110	3.16	.68	31%	56%	11%	2%
15. Practicum or internship experiences	72	3.21	.89	44%	39%	10%	7%
16. Study abroad experiences	36	3.36	.80	53%	33%	11%	3%
17. Appearance of printed information about program	97	3.13	.73	32%	52%	14%	2%
18. Usefulness of printed information about program	95	3.12	.76	32%	52%	14%	3%
19. Availability of research support	86	3.03	.79	28%	52%	15%	5%
20. Usefulness of research support	89	3.01	.76	25%	56%	15%	5%
VSU Facilities							
21. Quality of distance learning courses	44	3.18	.66	30%	61%	7%	2%
22. Library collection/resources	104	3.10	.89	38%	41%	14%	7%
23. Library facilities	105	3.29	.77	44%	45%	8%	4%
24. Computer lab facilities	104	3.44	.65	52%	41%	6%	1%
25. Computer lab availability	108	3.13	.84	36%	47%	10%	7%
26. Classroom facilities	106	3.14	.71	32%	51%	16%	1%
27. Laboratory facilities (not computer)	92	3.23	.76	39%	48%	10%	3%

Note: Percentages may not total 100% due to rounding.

Seniors' Ratings of Academic Program by College - Education

	n	Mean	Std. Deviation	Quality of Experience			
				Excellent	Good	Fair	Poor
VSU Personnel Support							
1. Availability of academic advisor	374	3.38	.79	54%	34%	9%	4%
2. Helpfulness of academic advisor	375	3.39	.79	56%	32%	9%	4%
3. Helpfulness of departmental office staff	361	3.24	.81	43%	42%	11%	4%
4. Opportunities for interaction with faculty	362	3.31	.72	45%	43%	10%	2%
5. Attitude of faculty toward students	378	3.30	.73	44%	43%	11%	2%
6. Overall quality of faculty	373	3.35	.68	46%	45%	8%	1%
VSU Instructional Support							
7. Courses as preparation for liberal education	286	3.21	.62	31%	59%	9%	1%
8. Courses as preparation for initial employment	324	3.32	.64	41%	51%	8%	1%
9. Courses as preparation for graduate school	294	3.32	.61	40%	53%	7%	0%
10. Ease of getting into required courses	361	2.99	.89	31%	44%	17%	8%
11. Ease of getting into elective courses	326	3.18	.72	34%	52%	12%	2%
12. Organization of the curriculum for your major	362	3.17	.71	33%	53%	12%	2%
13. Quality of instruction	357	3.31	.62	40%	52%	8%	0%
14. Fairness of grading	364	3.24	.69	37%	51%	11%	1%
15. Practicum or internship experiences	273	3.33	.71	45%	45%	8%	2%
16. Study abroad experiences	66	3.36	.62	42%	53%	3%	2%
17. Appearance of printed information about program	322	3.19	.71	35%	51%	13%	2%
18. Usefulness of printed information about program	323	3.17	.70	33%	52%	14%	1%
19. Availability of research support	257	3.12	.75	32%	51%	14%	3%
20. Usefulness of research support	252	3.12	.75	32%	50%	15%	2%
VSU Facilities							
21. Quality of distance learning courses	128	3.15	.75	34%	51%	13%	3%
22. Library collection/resources	315	3.25	.69	38%	51%	9%	2%
23. Library facilities	329	3.44	.62	50%	45%	5%	1%
24. Computer lab facilities	335	3.40	.70	50%	44%	4%	3%
25. Computer lab availability	332	3.23	.78	40%	46%	10%	4%
26. Classroom facilities	341	3.22	.69	37%	50%	13%	1%
27. Laboratory facilities (not computer)	260	3.20	.70	35%	53%	10%	2%

Note: Percentages may not total 100% due to rounding.

Seniors' Ratings of Academic Program by College - Nursing

	n	Mean	Std. Deviation	Quality of Experience			
				Excellent	Good	Fair	Poor
VSU Personnel Support							
1. Availability of academic advisor	41	3.07	.88	37%	39%	20%	5%
2. Helpfulness of academic advisor	43	3.14	.77	33%	54%	9%	5%
3. Helpfulness of departmental office staff	42	2.90	.88	29%	38%	29%	5%
4. Opportunities for interaction with faculty	41	3.12	.75	32%	51%	15%	2%
5. Attitude of faculty toward students	42	2.98	.84	29%	45%	21%	5%
6. Overall quality of faculty	41	3.02	.79	27%	54%	15%	5%
VSU Instructional Support							
7. Courses as preparation for liberal education	31	2.87	.72	16%	58%	23%	3%
8. Courses as preparation for initial employment	34	3.00	.70	24%	53%	24%	0%
9. Courses as preparation for graduate school	30	2.97	.81	27%	47%	23%	3%
10. Ease of getting into required courses	38	3.39	.76	53%	37%	8%	3%
11. Ease of getting into elective courses	35	3.31	.68	43%	46%	11%	0%
12. Organization of the curriculum for your major	39	2.74	.88	18%	49%	23%	10%
13. Quality of instruction	38	2.92	.78	21%	55%	18%	5%
14. Fairness of grading	40	2.93	.76	23%	50%	25%	3%
15. Practicum or internship experiences	24	3.00	.59	17%	67%	17%	0%
16. Study abroad experiences	5	3.20	.45	20%	80%	0%	0%
17. Appearance of printed information about program	40	2.93	.62	15%	63%	23%	0%
18. Usefulness of printed information about program	40	2.75	.74	15%	48%	35%	3%
19. Availability of research support	35	3.00	.80	29%	46%	23%	3%
20. Usefulness of research support	35	2.94	.87	29%	43%	23%	6%
VSU Facilities							
21. Quality of distance learning courses	13	2.85	.80	15%	62%	15%	8%
22. Library collection/resources	41	3.32	.61	39%	54%	7%	0%
23. Library facilities	40	3.50	.56	53%	45%	3%	0%
24. Computer lab facilities	40	3.18	.81	38%	48%	10%	5%
25. Computer lab availability	39	3.05	.79	28%	54%	13%	5%
26. Classroom facilities	41	2.73	.92	20%	46%	22%	12%
27. Laboratory facilities (not computer)	35	2.74	.89	20%	43%	29%	9%

Note: Percentages may not total 100% due to rounding.

Seniors' Ratings of the University's Procedures

	n	Mean	Std. Deviation	Quality of Service			
				Excellent	Good	Fair	Poor
1. Admission to VSU	919	3.36	.65	44%	49%	6%	1%
Yes - Procedures Clear	852	3.41	.60	46%	49%	4%	1%
No - Procedures Not Clear	31	2.03	.80	3%	23%	48%	26%
2. Attending VSU orientation program	813	3.17	.75	35%	49%	13%	3%
Yes - Procedures Clear	740	3.23	.70	37%	51%	11%	2%
No - Procedures Not Clear	34	1.88	.73	3%	12%	56%	29%
3. Registering for classes	916	3.09	.81	33%	47%	16%	4%
Yes - Procedures Clear	828	3.15	.74	34%	49%	15%	2%
No - Procedures Not Clear	42	1.76	.79	2%	14%	41%	43%
4. Dropping/adding courses	897	3.22	.75	38%	50%	9%	4%
Yes - Procedures Clear	802	3.29	.68	40%	51%	7%	2%
No - Procedures Not Clear	40	1.93	.76	0%	25%	43%	33%
5. Paying fees	903	3.18	.74	35%	52%	10%	3%
Yes - Procedures Clear	790	3.27	.67	38%	53%	8%	2%
No - Procedures Not Clear	64	2.16	.76	3%	28%	50%	19%
6. Applying for student grants	562	3.08	.84	33%	47%	14%	6%
Yes - Procedures Clear	448	3.27	.69	39%	52%	7%	2%
No - Procedures Not Clear	76	2.01	.83	4%	22%	45%	29%
7. Applying for student loans	652	3.12	.81	35%	47%	14%	5%
Yes - Procedures Clear	534	3.27	.70	40%	50%	9%	2%
No - Procedures Not Clear	63	1.94	.74	3%	14%	56%	27%
8. Applying for scholarships	574	2.99	.87	29%	48%	15%	8%
Yes - Procedures Clear	461	3.19	.74	35%	51%	11%	3%
No - Procedures Not Clear	74	1.86	.82	3%	19%	41%	38%
9. Applying for work-study program	287	3.04	.91	34%	44%	13%	9%
Yes - Procedures Clear	208	3.25	.76	41%	48%	8%	4%
No - Procedures Not Clear	38	1.89	.92	8%	13%	40%	40%

Respondents may rate procedures without responding to whether the procedure is clear; therefore, yes and no responses may not add to the same total as the overall procedure rating.

Note: Percentages may not total to 100% due to rounding.

Seniors' Ratings of their Atmosphere for Learning

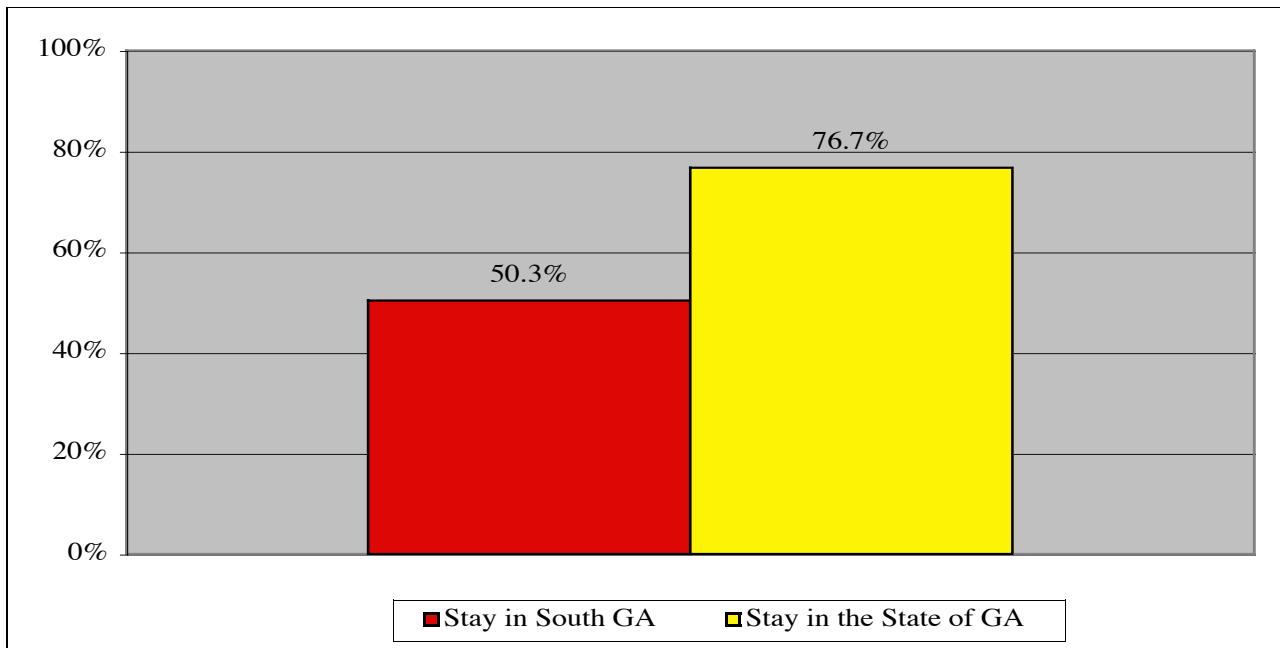
Atmosphere for Learning	n	Mean	Std. Deviation	Agreement with Statement			
				Definitely Yes	Probably Yes	Probably No	Definitely No
VSU helped me develop and demonstrate my ability to think critically and independently	944	3.47	.61	52%	45%	3%	1%
VSU helped me to engage in free and open exchange of ideas	932	3.44	.65	51%	42%	6%	1%
VSU helped me to acquire and draw upon knowledge embodied in the liberal arts	875	3.29	.72	43%	44%	11%	2%
VSU helped me to function in a professional setting and to act with ethical awareness	923	3.50	.65	57%	37%	5%	1%
VSU encouraged me to expand my range of human experience personally, culturally, socially, artistically, and politically	906	3.39	.72	51%	40%	7%	2%
If I started college over, I would choose to attend VSU	935	3.26	.84	47%	38%	10%	5%
I would recommend VSU to others	936	3.50	.69	58%	35%	4%	2%
				Quality of Ratings			
	n	Mean	SD	Excellent	Good	Fair	Poor
I would rate my academic experiences at VSU as . . .	948	3.33	.66	42%	49%	8%	1%
I would rate my social experiences at VSU as . . .	941	3.23	.75	41%	44%	13%	2%
I would rate my overall experiences at VSU as . . .	947	3.35	.66	45%	47%	8%	1%

Note: Percentages may not total 100% due to rounding.

Seniors' Future Plans

	Total n	Full-time		Part-time	
		n	%	n	%
1. Working	862	595	69%	175	20%
2. Seeking employment	811	522	64%	123	15%
3. Pursuing further graduate work	825	313	38%	169	21%
	Total n	Yes		No	
		n	%	n	%
4. Continue employment in current career	774	311	40%	463	60%
5. Beginning/continuing military service	793	30	4%	763	96%
6. Caring for home/family	802	383	48%	419	52%

Seniors' Plans to Stay in Georgia



- 453 seniors plan to stay in the South Georgia area.
- 677 seniors plan to stay in the state of Georgia.

Summary Highlights

VSU Senior Exit 2005-2006

Overall satisfaction with VSU was indicated by:

- 94% of respondents would recommend VSU to others.
- 92% of respondents rate their academic experience at VSU as excellent or good.
- 91% of respondents rate their overall experience at VSU as excellent or good.
- 85% of respondents rate their social experience at VSU as excellent or good.
- 85% of respondents would definitely choose VSU if they started school over.

Of the VSU services/facilities that at least 15% of seniors responded to, the three with the highest percentage of "excellent" quality of service ratings were:

- Athletic and Recreation Facilities (64%)
- Sororities and Fraternities (56%)
- VSU Home page (47%)

The four academic personnel support experiences with the highest percentage of "excellent" responses in the major field of study were:

- Availability of academic advisor (54%)
- Helpfulness of academic advisor (54%)
- Opportunities for interaction with faculty (46%)
- Overall quality of faculty (46%)

The four academic instructional support experiences with the highest percentage of "excellent" responses in the major field of study were:

- Study abroad experiences (43%)
- Practicum or internship experiences (42%)
- Courses as preparation for graduate school (37%)
- Quality of instruction (37%)

The four academic facilities with the highest percentage of "excellent" responses in the major field of study were:

- Computer lab facilities (48%)
- Library facilities (47%)
- Computer lab availability (40%)
- Library collection/resources (38%)

Note: Percentages may differ from those on tables due to rounding and grouping of responses.